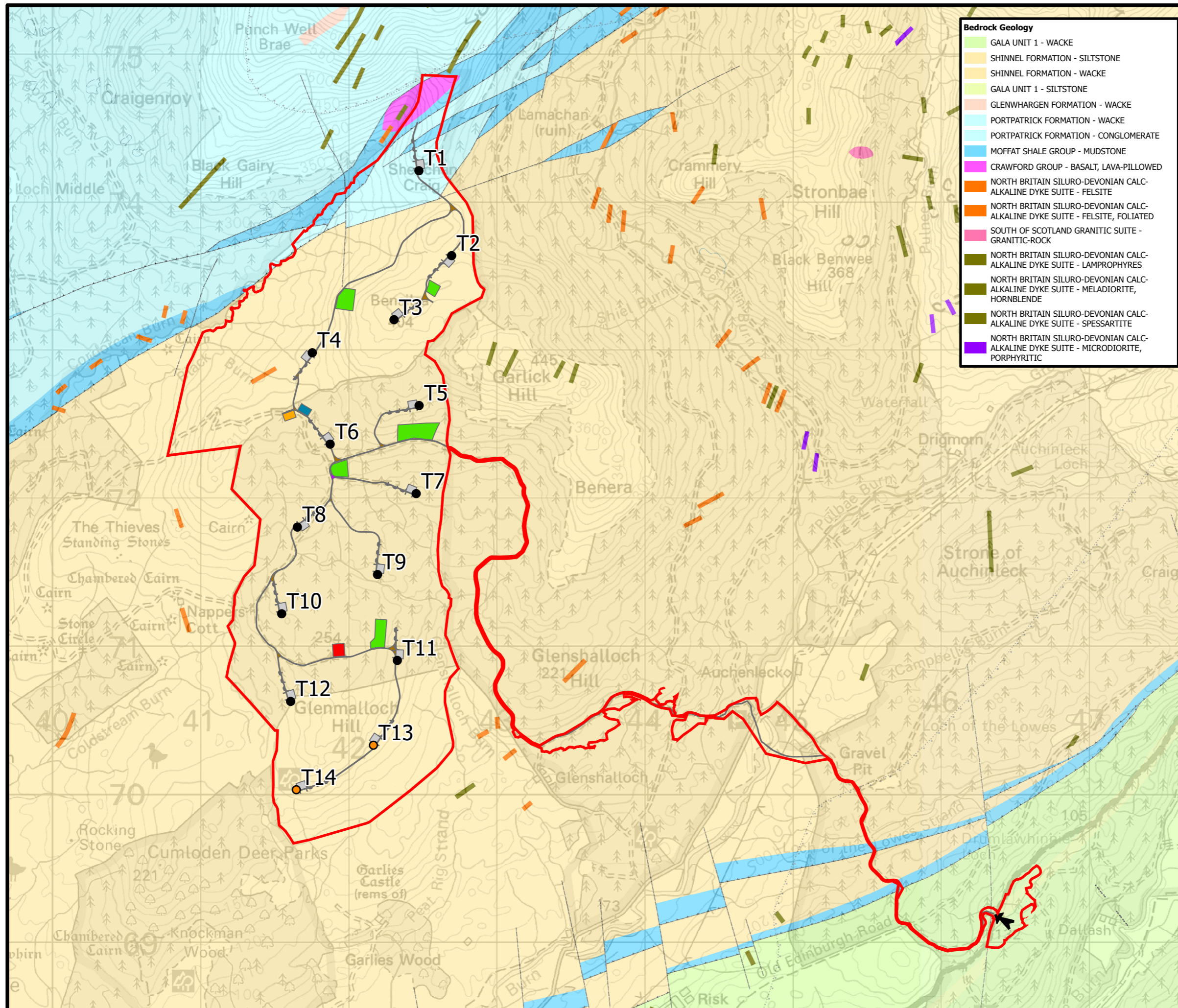


BLAIR HILL WIND FARM

Figure 10.6

BEDROCK GEOLOGY

Reproduced from Ordnance Survey digital data © Crown copyright and database rights 2024. All rights reserved. License number 0100031673.



Bedrock Geology

- GALA UNIT 1 - WACKE
- SHINNEL FORMATION - SILTSTONE
- SHINNEL FORMATION - WACKE
- GALA UNIT 1 - SILTSTONE
- GLENWHARGEN FORMATION - WACKE
- PORTPATRICK FORMATION - WACKE
- PORTPATRICK FORMATION - CONGLOMERATE
- MOFFAT SHALE GROUP - MUDSTONE
- CRAWFORD GROUP - BASALT, LAVA-PILLOWED
- NORTH BRITAIN SILURO-DEVONIAN CALC-ALKALINE DYKE SUITE - FELSITE
- NORTH BRITAIN SILURO-DEVONIAN CALC-ALKALINE DYKE SUITE - FELSITE, FOLIATED
- SOUTH OF SCOTLAND GRANITIC SUITE - GRANITIC-ROCK
- NORTH BRITAIN SILURO-DEVONIAN CALC-ALKALINE DYKE SUITE - LAMPROPHYRES
- NORTH BRITAIN SILURO-DEVONIAN CALC-ALKALINE DYKE SUITE - MELADIORITE, HORNBLENDE
- NORTH BRITAIN SILURO-DEVONIAN CALC-ALKALINE DYKE SUITE - SPESARTITE
- NORTH BRITAIN SILURO-DEVONIAN CALC-ALKALINE DYKE SUITE - MICRODIORITE, PORPHYRITIC

- Site Boundary
- Site Entrance
- Indicative Turbine Locations**
- 210 m Tip Height
- 250 m Tip Height
- Temporary Hardstandings
- Permanent Hardstandings
- Watercourse Crossing
- New Site Tracks
- Upgraded Tracks
- Control Building and Substation
- Borrow Pit Search Areas
- Temp Construction Compound
- Temp Batching Plant
- Linear Features**
- Inferred Fault Downthrow Unspecified
- Inferred Thrust Fault Triangle on Hangingwall
- Form line
- Limit Metamorphic Aureole



SCALE - 1:25,000 @ A3

ENVIRONMENTAL IMPACT ASSESSMENT REPORT 2024

THIS DRAWING IS THE PROPERTY OF RENEWABLE ENERGY SYSTEMS LTD. AND NO REPRODUCTION MAY BE MADE IN WHOLE OR IN PART WITHOUT PERMISSION