



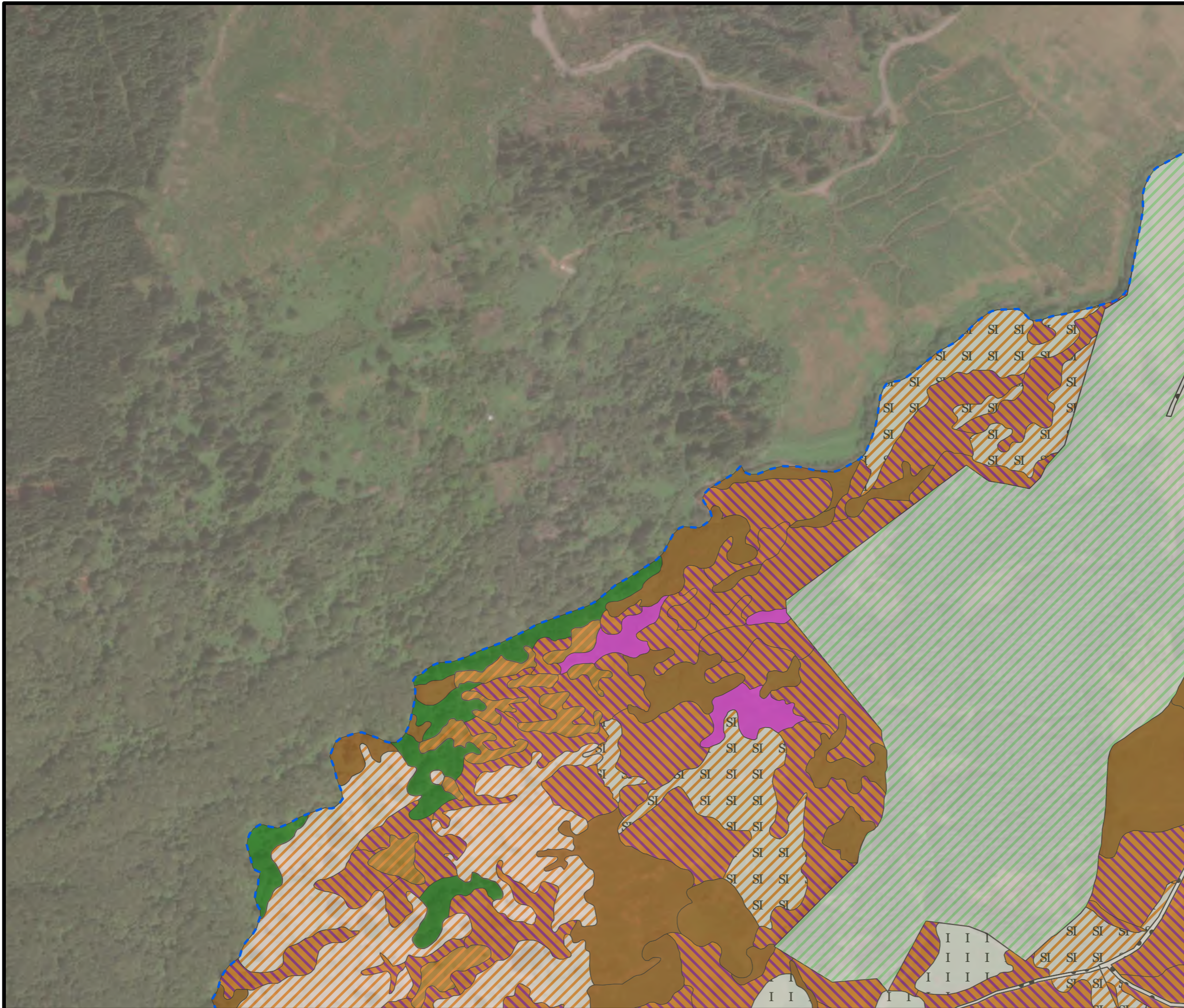
BLAIR HILL WIND FARM

FIGURE 8.3.1

NATIONAL VEGETATION CLASSIFICATION SURVEY AREA AND SURVEY RESULTS

Aerial: Maxar, Microsoft.

- NVC SURVEY AREA
- PHASE 1 HABITAT (CODE)**
- Broad-Leaved Semi-Natural Woodland (A1.1.1)
 - Coniferous Plantation Woodland (A1.2.2)
 - Unimproved Acid Grassland (B1.1)
 - Unimproved Acid Grassland/Continuous Bracken Mosaic (B1.1/C1.1)
 - Semi-Improved Acid Grassland (B1.2)
 - Improved Grassland (B4)
 - Marsh/Marshy Grassland (B5)
 - Continuous Bracken (C1.1)
 - Acid Neutral Flush (E2.1)
 - Running Water (G2)
 - Bare Ground (J4)



SCALE - 1:5,000 @ A3

ENVIRONMENTAL IMPACT ASSESSMENT REPORT 2025

THIS DRAWING IS THE PROPERTY OF RENEWABLE ENERGY SYSTEMS LTD. AND NO REPRODUCTION MAY BE MADE IN WHOLE OR IN PART WITHOUT PERMISSION

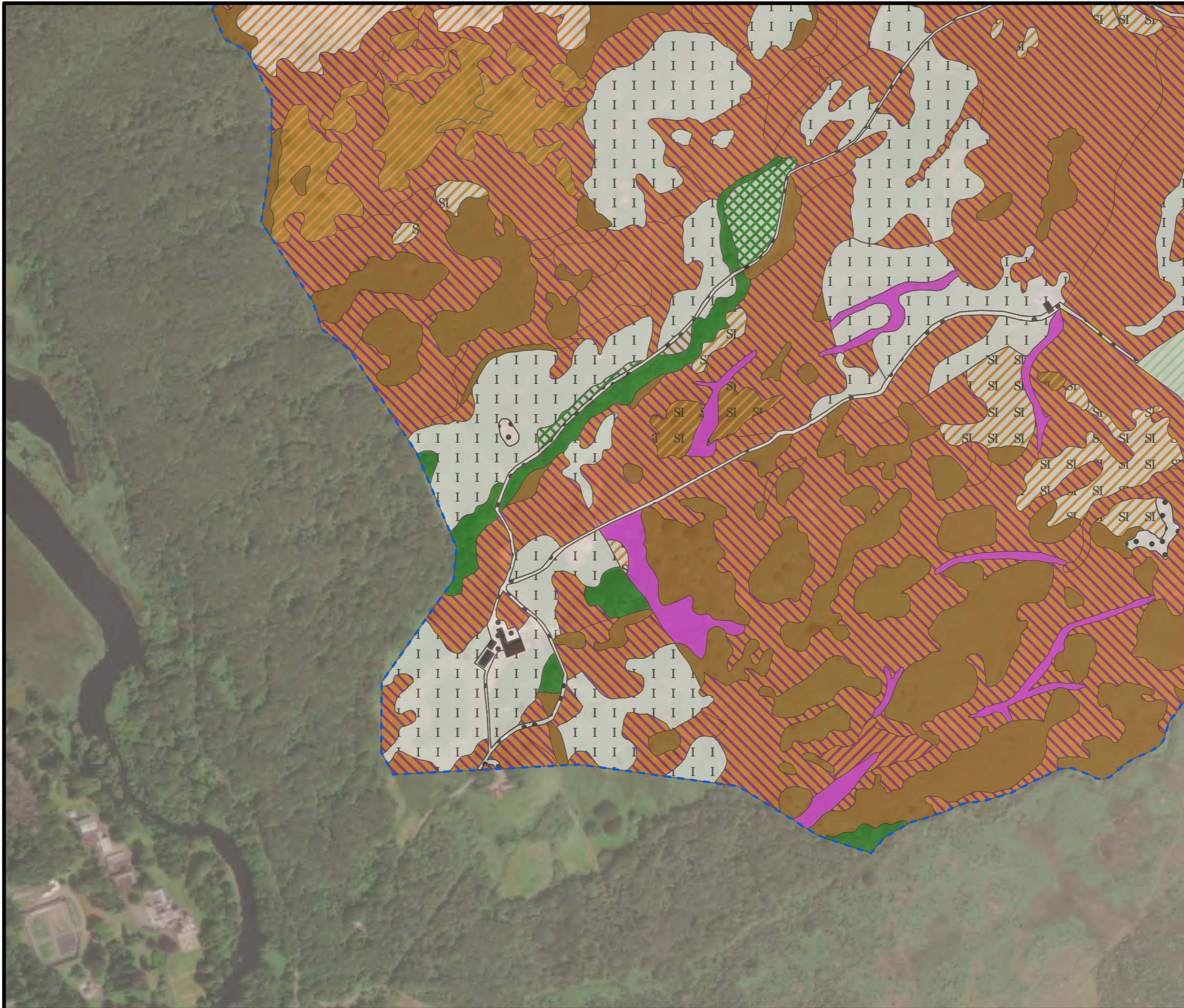


BLAIR HILL WIND FARM

FIGURE 8.3.2

NATIONAL VEGETATION CLASSIFICATION SURVEY AREA AND SURVEY RESULTS

Aerial: Maxar, Microsoft.



- NVC SURVEY AREA**
- PHASE 1 HABITAT (CODE)**
- Broad-Leaved Semi-Natural Woodland (A1.1.1)
 - Coniferous Plantation Woodland (A1.2.2)
 - Dense/Continuous Scrub (A2.1)
 - Unimproved Acid Grassland (B1.1)
 - Unimproved Acid Grassland/Continuous Bracken Mosaic (B1.1/C1.1)
 - Semi-Improved Acid Grassland (B1.2)
 - Semi-Improved Acid Grassland/Continuous Bracken Mosaic (B1.2/C1.1)
 - Improved Grassland (B4)
 - Marsh/Marshy Grassland (B5)
 - Marsh/Marshy Grassland/Wet Dwarf Shrub Heath Mosaic (B5/D2)
 - Continuous Bracken (C1.1)
 - Tall Ruderal (C3.1)
 - Acid Neutral Flush (E2.1)
 - Building (J3.6)
 - Bare Ground (J4)



SCALE - 1:5,000 @ A3

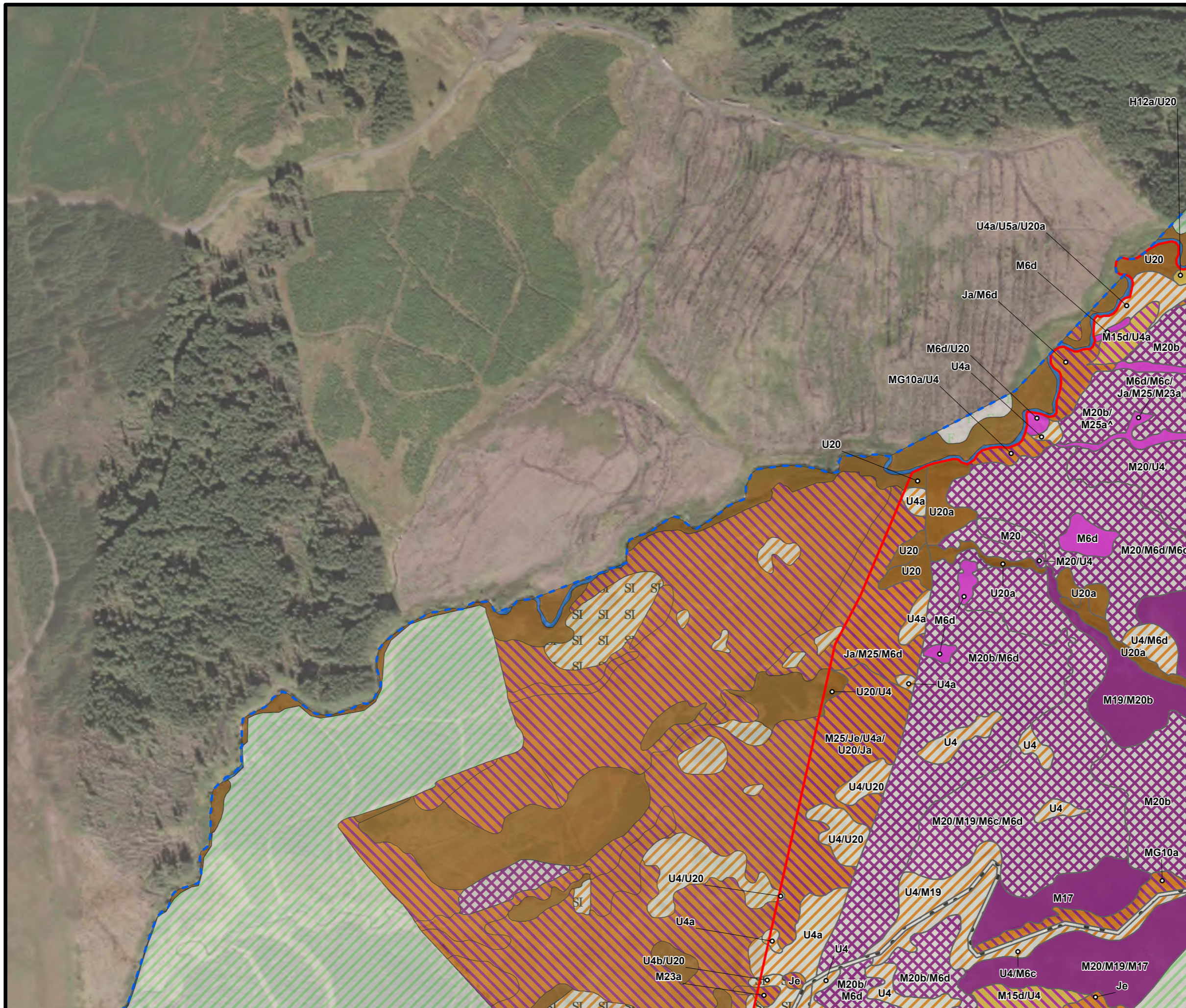
ENVIRONMENTAL IMPACT ASSESSMENT REPORT 2025

THIS DRAWING IS THE PROPERTY OF RENEWABLE ENERGY SYSTEMS LTD. AND NO REPRODUCTION MAY BE MADE IN WHOLE OR IN PART WITHOUT PERMISSION

FIGURE 8.3.3

NATIONAL VEGETATION CLASSIFICATION SURVEY AREA AND SURVEY RESULTS

Aerial: Maxar, Microsoft.



- SITE BOUNDARY
- NVC SURVEY AREA
- PHASE 1 HABITAT (CODE)**
- Coniferous Plantation Woodland (A1.2.2)
- Recently Felled Coniferous Woodland (A4.2)
- Unimproved Acid Grassland (B1.1)
- Semi-Improved Acid Grassland (B1.2)
- Marsh/Marshy Grassland (B5)
- Continuous Bracken (C1.1)
- Acid Dry Dwarf Shrub Heath (D1.1)
- Wet Dwarf Shrub Heath (D2)
- Blanket Bog (E1.6.1)
- Wet Modified Bog (E1.7)
- Acid Neutral Flush (E2.1)
- Running Water (G2)
- Bare Ground (J4)



SCALE - 1:5,000 @ A3

ENVIRONMENTAL IMPACT ASSESSMENT REPORT 2025

THIS DRAWING IS THE PROPERTY OF RENEWABLE ENERGY SYSTEMS LTD. AND NO REPRODUCTION MAY BE MADE IN WHOLE OR IN PART WITHOUT PERMISSION