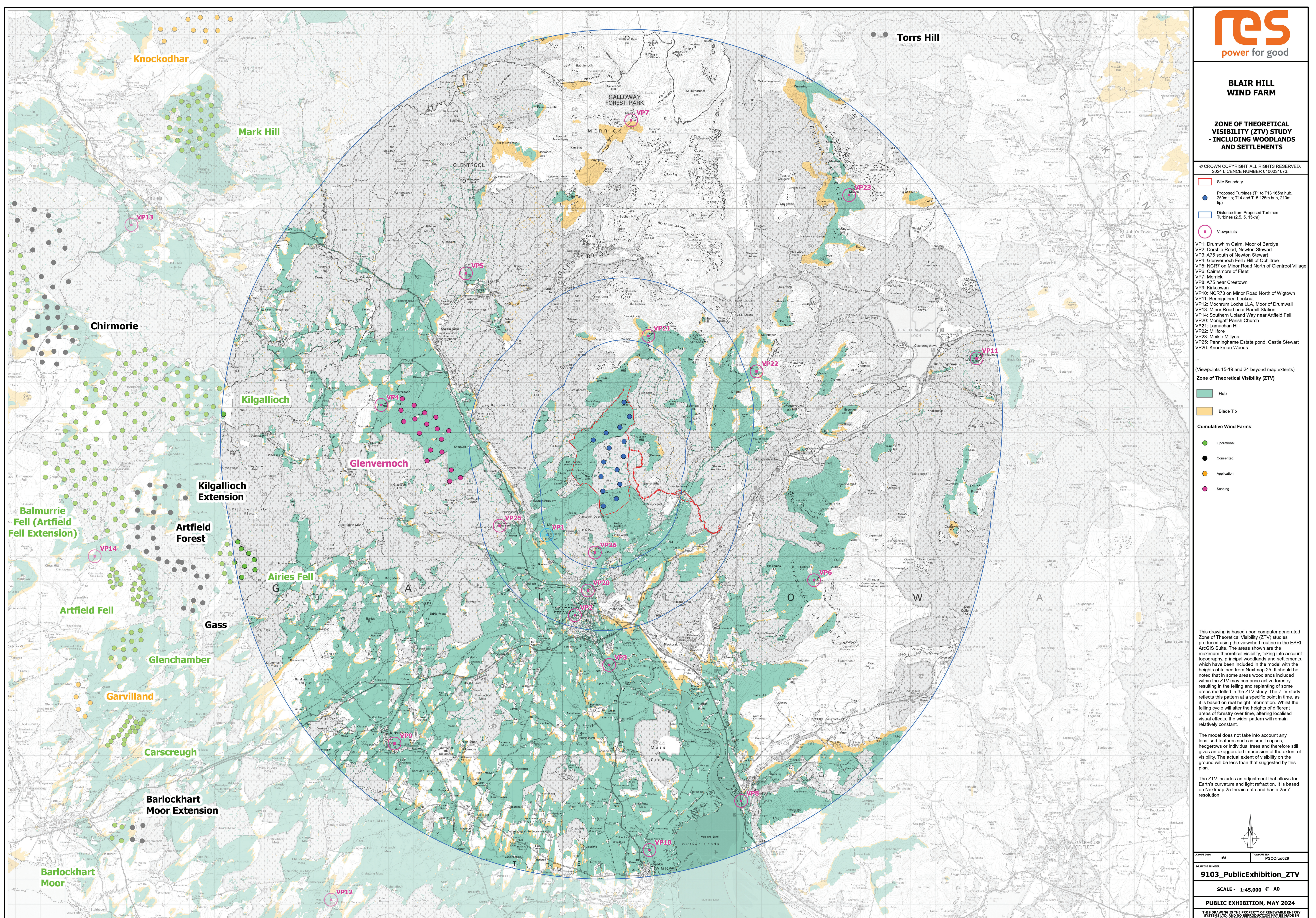


## Landscape and Visual Impact

To help identify which landscape and visual resources may be affected by the proposed wind farm, a computer-modelled zone of theoretical visibility (ZTV) plan has been produced, as shown below.

This illustrates the maximum theoretical area of visibility of the proposed wind farm based on topography.



A series of photomontages are available on view at today's consultation, providing projected viewpoints from 7 different representative locations for the updated design of 15 turbines.

In addition, we have created a 3D model video which is on display here today which shows what the wind farm could look like from a number of extra viewpoints, in addition to those to be included in the Landscape and Visual Impact Assessment.