

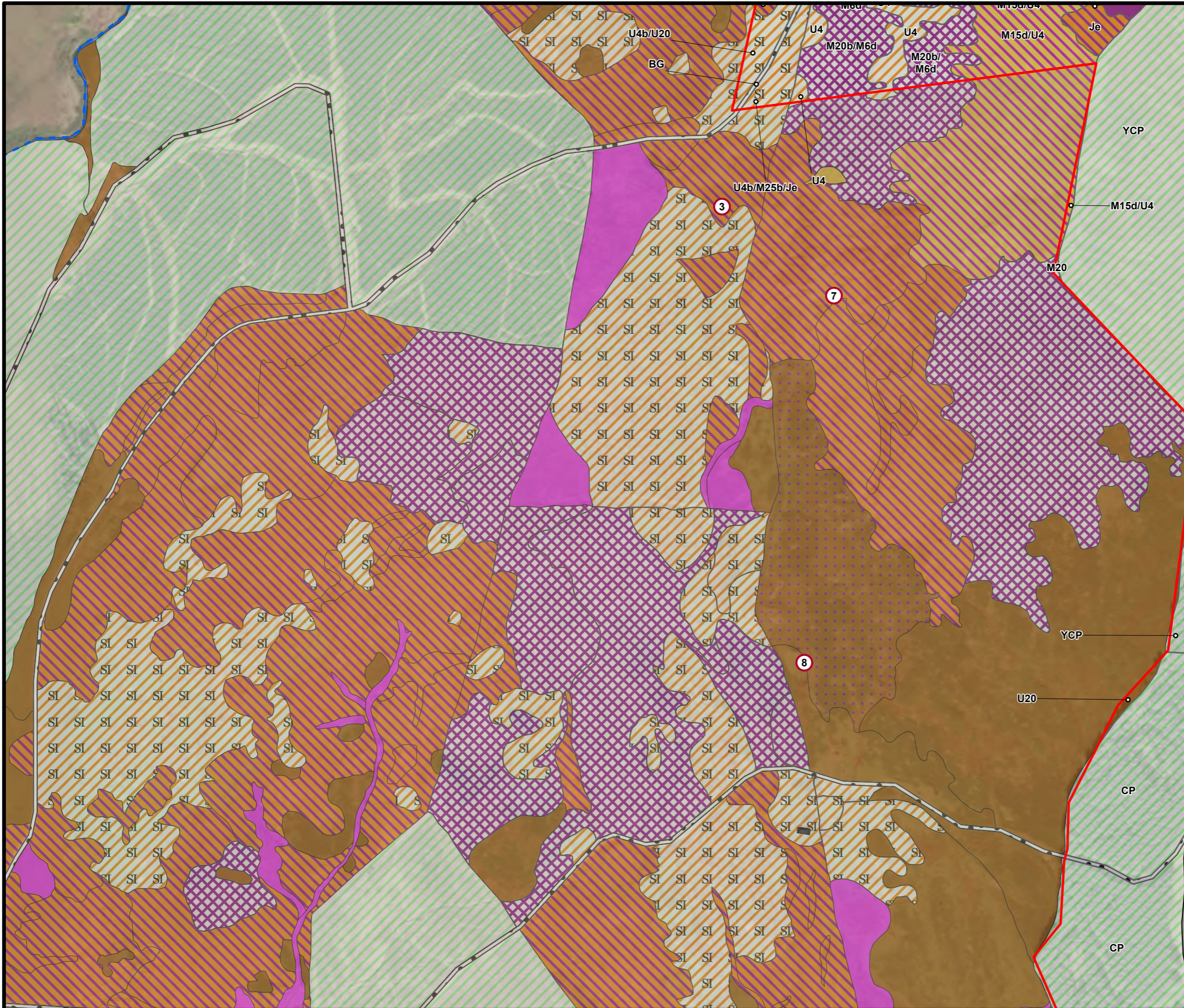


# BLAIR HILL WIND FARM

## FIGURE 8.3.4

### NATIONAL VEGETATION CLASSIFICATION SURVEY AREA AND SURVEY RESULTS

Aerial: Maxar, Microsoft.



- SITE BOUNDARY
  - INFRASTRUCTURE
  - NVC SURVEY AREA
  - HABITAT TARGET NOTE
- PHASE 1 HABITAT (CODE)**
- Coniferous Plantation Woodland (A1.2.2)
  - Unimproved Acid Grassland (B1.1)
  - Semi-Improved Acid Grassland (B1.2)
  - Marsh/Marshy Grassland (B5)
  - Continuous Bracken (C1.1)
  - Continuous Bracken/Wet Modified Bog Mosaic (C1.1/E1.7)
  - Acid Dry Dwarf Shrub Heath (D1.1)
  - Wet Dwarf Shrub Heath (D2)
  - Blanket Bog (E1.6.1)
  - Wet Modified Bog (E1.7)
  - Acid Neutral Flush (E2.1)
  - Running Water (G2)
  - Building (J3.6)
  - Bare Ground (J4)



SCALE - 1:5,000 @ A3

### ENVIRONMENTAL IMPACT ASSESSMENT REPORT 2025

THIS DRAWING IS THE PROPERTY OF RENEWABLE ENERGY SYSTEMS LTD. AND NO REPRODUCTION MAY BE MADE IN WHOLE OR IN PART WITHOUT PERMISSION













# BLAIR HILL WIND FARM

## FIGURE 8.3.5

### NATIONAL VEGETATION CLASSIFICATION SURVEY AREA AND SURVEY RESULTS

Aerial: Maxar, Microsoft.



-  SITE BOUNDARY
-  NVC SURVEY AREA
- PHASE 1 HABITAT (CODE)**
-  Coniferous Plantation Woodland (A1.2.2)
-  Semi-Improved Acid Grassland (B1.2)
-  Improved Grassland (B4)
-  Marsh/Marshy Grassland (B5)
-  Continuous Bracken (C1.1)
-  Wet Dwarf Shrub Heath (D2)
-  Acid Neutral Flush (E2.1)
-  Bare Ground (J4)



SCALE - 1:5,000 @ A3

#### ENVIRONMENTAL IMPACT ASSESSMENT REPORT 2025

THIS DRAWING IS THE PROPERTY OF RENEWABLE ENERGY SYSTEMS LTD. AND NO REPRODUCTION MAY BE MADE IN WHOLE OR IN PART WITHOUT PERMISSION



# BLAIR HILL WIND FARM

## FIGURE 8.3.6

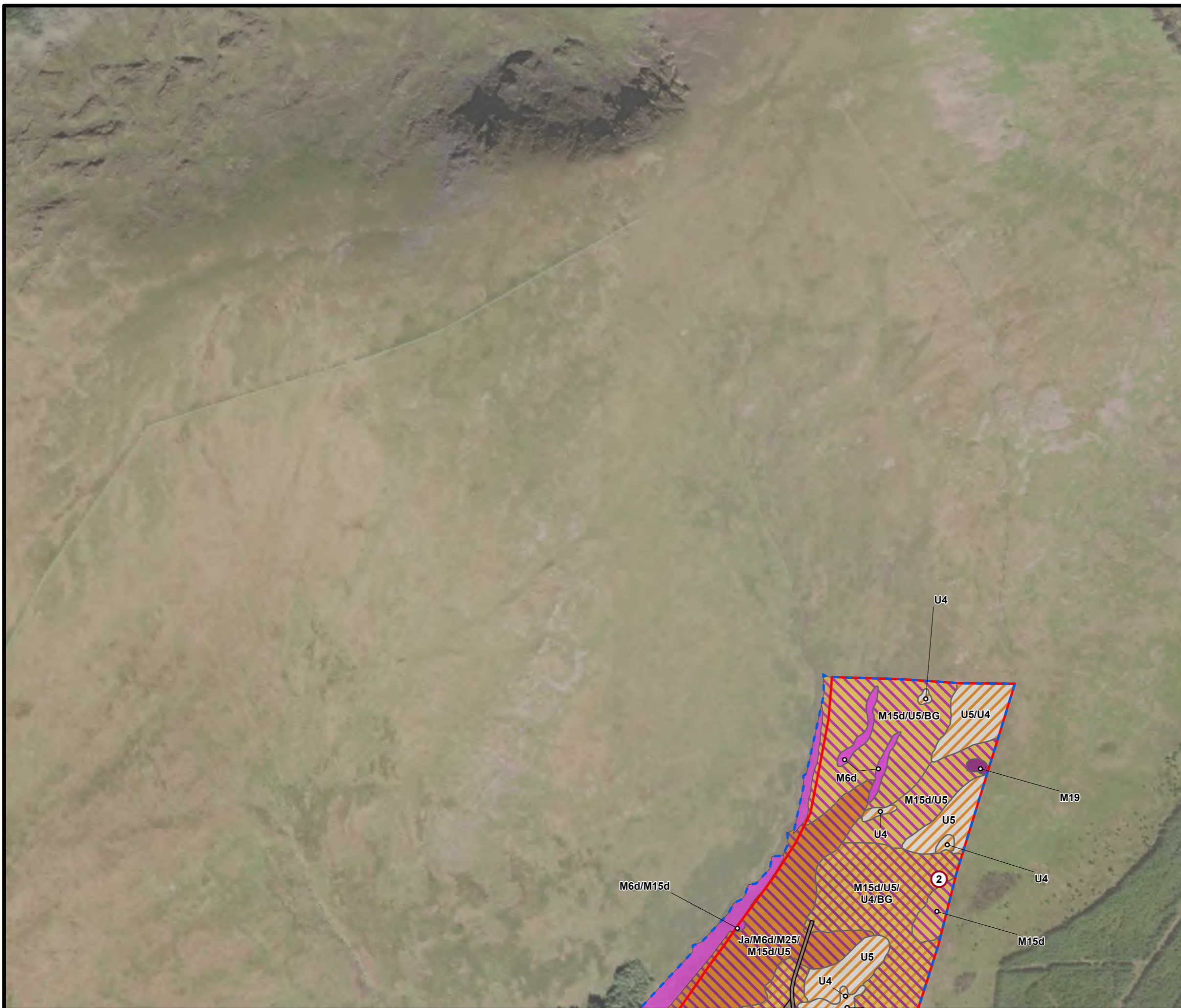
### NATIONAL VEGETATION CLASSIFICATION SURVEY AREA AND SURVEY RESULTS

Aerial: Maxar, Microsoft.

- SITE BOUNDARY
- INFRASTRUCTURE
- NVC SURVEY AREA
- HABITAT TARGET NOTE

#### PHASE 1 HABITAT (CODE)

- Coniferous Plantation Woodland (A1.2.2)
- Unimproved Acid Grassland (B1.1)
- Marsh/Marshy Grassland (B5)
- Wet Dwarf Shrub Heath (D2)
- Wet Heath/Acid Grassland Mosaic (D6)
- Blanket Bog (E1.6.1)
- Acid Neutral Flush (E2.1)



SCALE - 1:5,000 @ A3

#### ENVIRONMENTAL IMPACT ASSESSMENT REPORT 2025

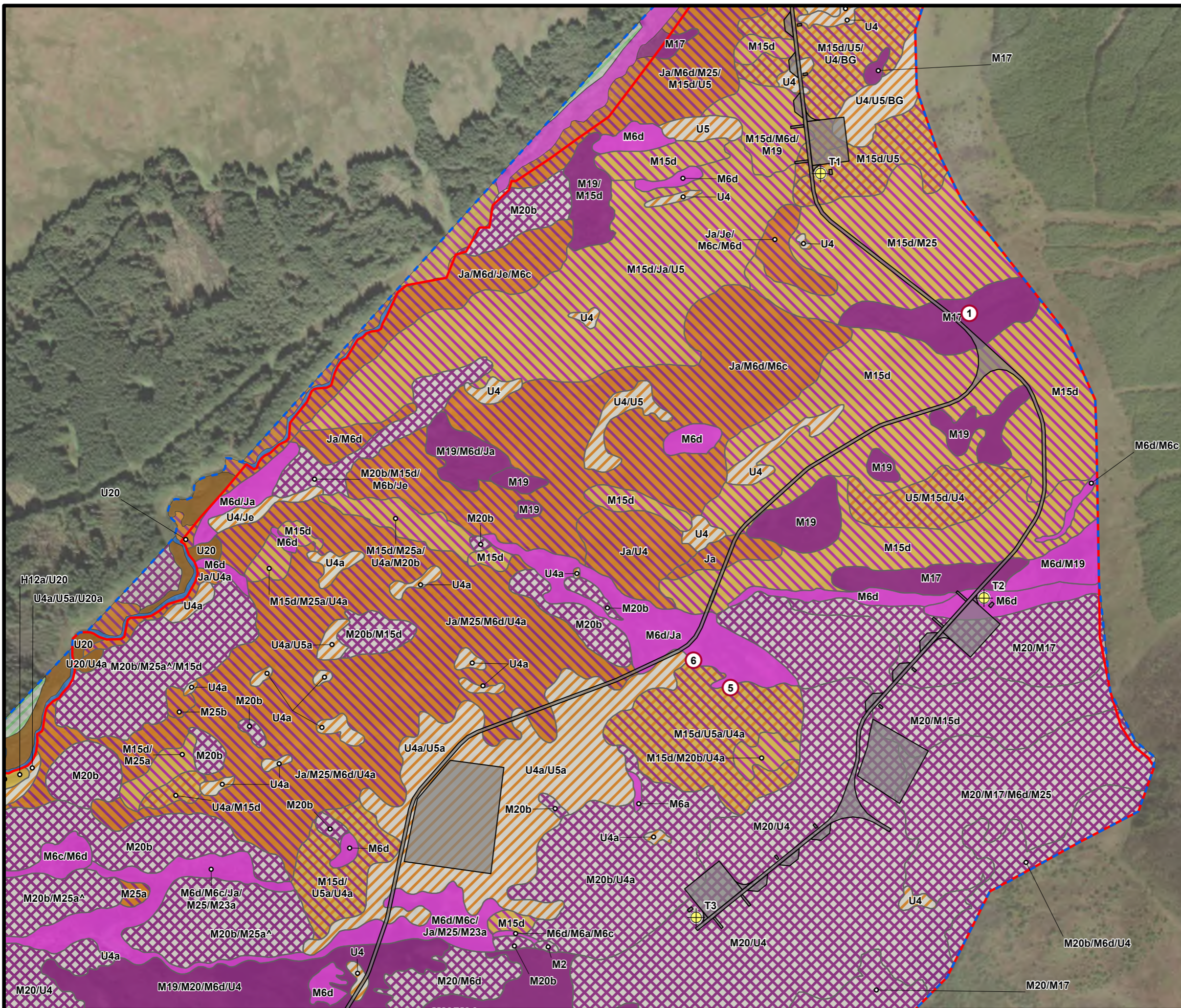
THIS DRAWING IS THE PROPERTY OF RENEWABLE ENERGY SYSTEMS LTD. AND NO REPRODUCTION MAY BE MADE IN WHOLE OR IN PART WITHOUT PERMISSION

**BLAIR HILL WIND FARM**

**FIGURE 8.3.7**

**NATIONAL VEGETATION CLASSIFICATION SURVEY AREA AND SURVEY RESULTS**

Aerial: Maxar, Microsoft.



- SITE BOUNDARY
  - TURBINE
  - INFRASTRUCTURE
  - NVC SURVEY AREA
  - HABITAT TARGET NOTE
- PHASE 1 HABITAT (CODE)**
- Coniferous Plantation Woodland (A1.2.2)
  - Unimproved Acid Grassland (B1.1)
  - Marsh/Marshy Grassland (B5)
  - Continuous Bracken (C1.1)
  - Acid Dry Dwarf Shrub Heath (D1.1)
  - Wet Dwarf Shrub Heath (D2)
  - Wet Heath/Acid Grassland Mosaic (D6)
  - Blanket Bog (E1.6.1)
  - Wet Modified Bog (E1.7)
  - Acid Neutral Flush (E2.1)
  - Running Water (G2)



SCALE - 1:5,000 @ A3

**ENVIRONMENTAL IMPACT ASSESSMENT REPORT 2025**

THIS DRAWING IS THE PROPERTY OF RENEWABLE ENERGY SYSTEMS LTD. AND NO REPRODUCTION MAY BE MADE IN WHOLE OR IN PART WITHOUT PERMISSION