



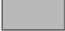








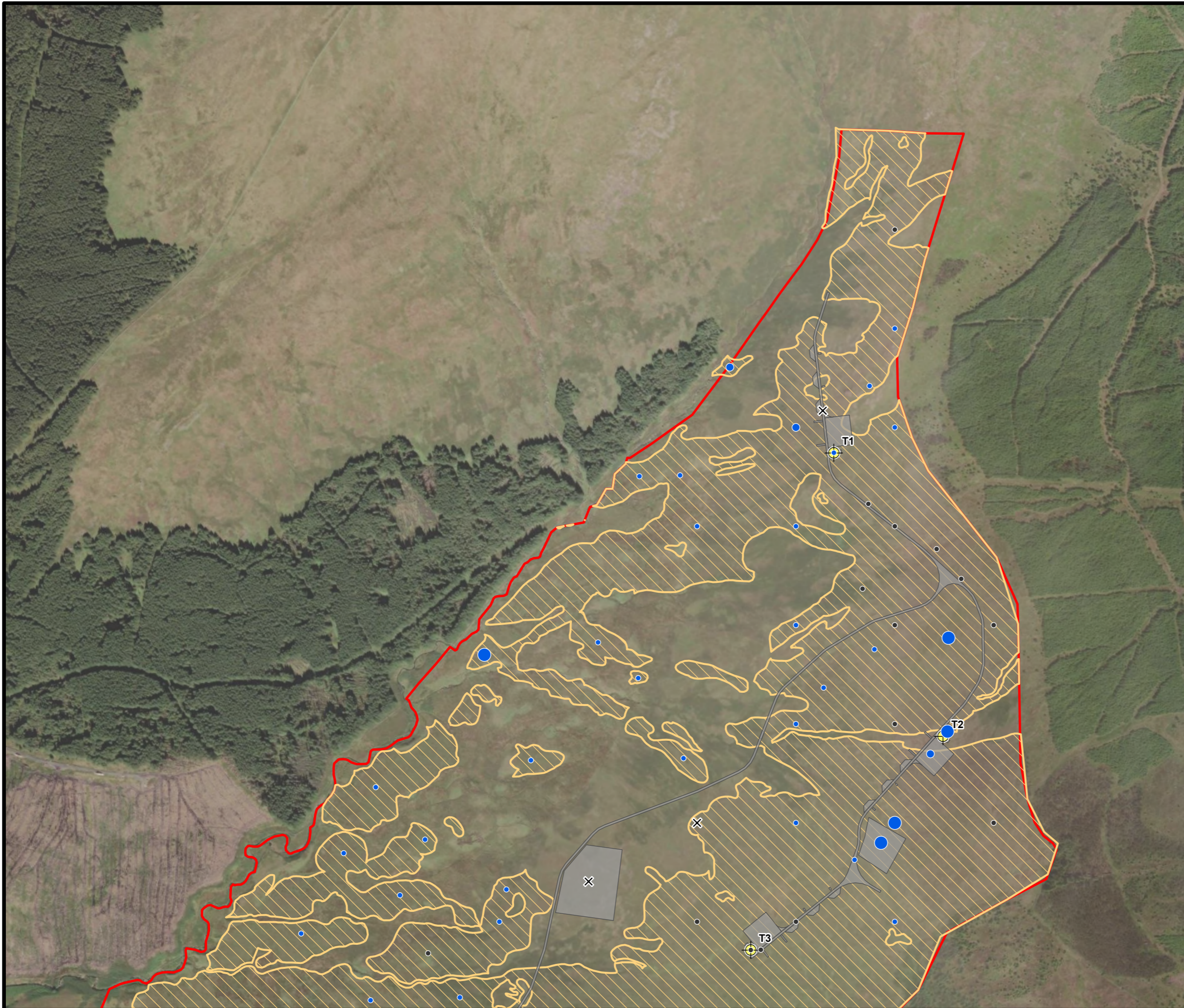
BLAIR HILL WIND FARM

FIGURE 8.8.1

SPHAGNA ABUNDANCE AND DISTRIBUTION

Aerial: Maxar, Microsoft.

-  SITE BOUNDARY
 -  TURBINE
 -  INFRASTRUCTURE
 -  PEATLAND CONDITION SURVEY AREA
- SPHAGNA ABUNDANCE**
-  0%
 -  1 TO 25%
 -  26 TO 50%
 -  51 TO 100%
 -  NOT PEATLAND



SCALE - 1:7,500 @ A3

ENVIRONMENTAL IMPACT
ASSESSMENT REPORT 2025

THIS DRAWING IS THE PROPERTY OF RENEWABLE ENERGY SYSTEMS LTD. AND NO REPRODUCTION MAY BE MADE IN WHOLE OR IN PART WITHOUT PERMISSION

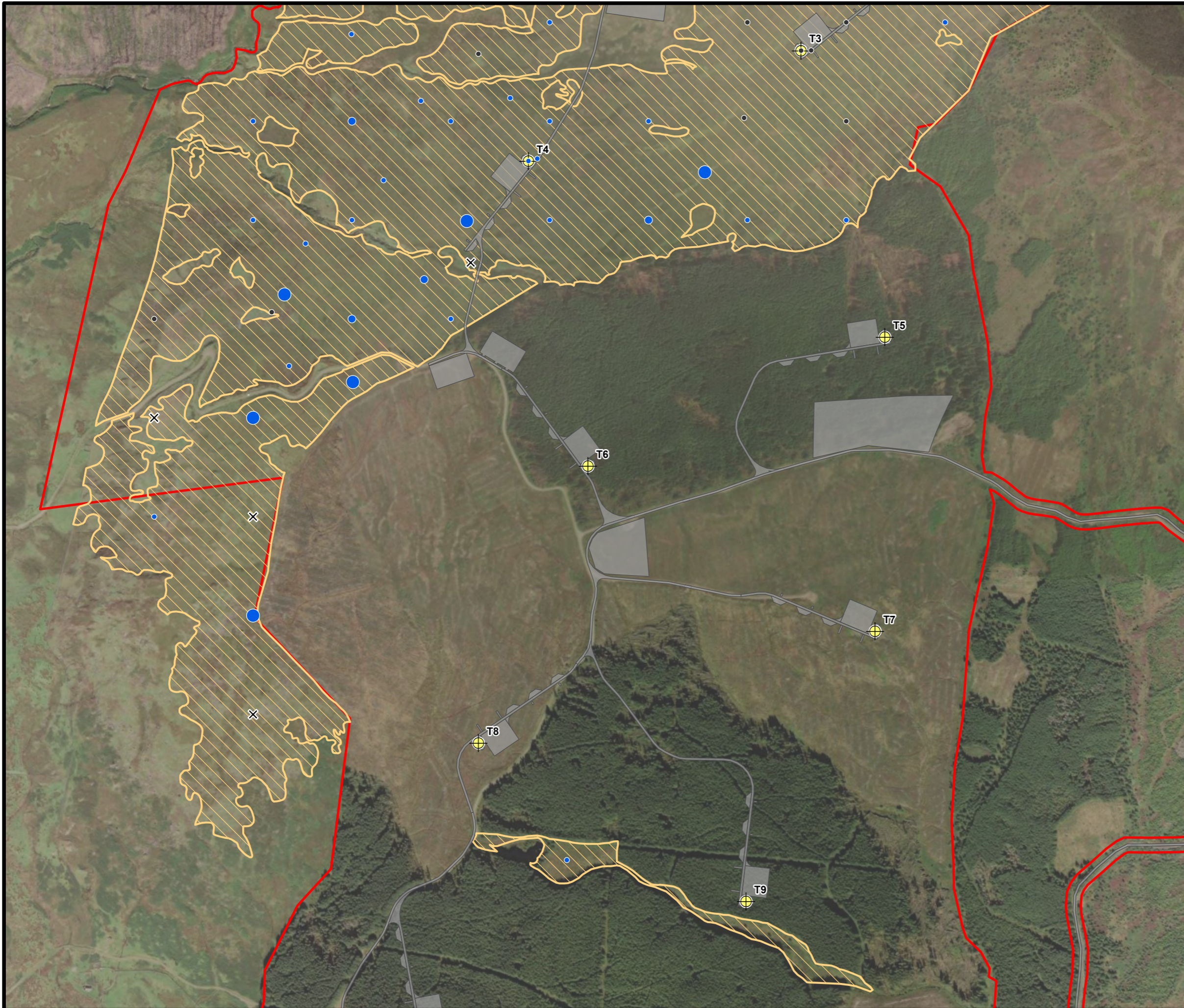


BLAIR HILL WIND FARM

FIGURE 8.8.2

SPHAGNA ABUNDANCE AND DISTRIBUTION

Aerial: Maxar, Microsoft.



- SITE BOUNDARY
- TURBINE
- INFRASTRUCTURE
- PEATLAND CONDITION SURVEY AREA

SPHAGNA ABUNDANCE

- 0%
- 1 TO 25%
- 26 TO 50%
- 51 TO 100%
- NOT PEATLAND



SCALE - 1:7,500 @ A3

ENVIRONMENTAL IMPACT
ASSESSMENT REPORT 2025

THIS DRAWING IS THE PROPERTY OF RENEWABLE ENERGY SYSTEMS LTD. AND NO REPRODUCTION MAY BE MADE IN WHOLE OR IN PART WITHOUT PERMISSION



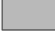



BLAIR HILL WIND FARM






FIGURE 8.8.3

SPHAGNA ABUNDANCE AND DISTRIBUTION

Aerial: Maxar, Microsoft.

-  SITE BOUNDARY
-  TURBINE
-  INFRASTRUCTURE
-  PEATLAND CONDITION SURVEY AREA

SPHAGNA ABUNDANCE

-  0%
-  1 TO 25%
-  26 TO 50%
-  51 TO 100%
-  NOT PEATLAND



SCALE - 1:7,500 @ A3

ENVIRONMENTAL IMPACT
ASSESSMENT REPORT 2025

THIS DRAWING IS THE PROPERTY OF RENEWABLE ENERGY
SYSTEMS LTD. AND NO REPRODUCTION MAY BE MADE IN
WHOLE OR IN PART WITHOUT PERMISSION