

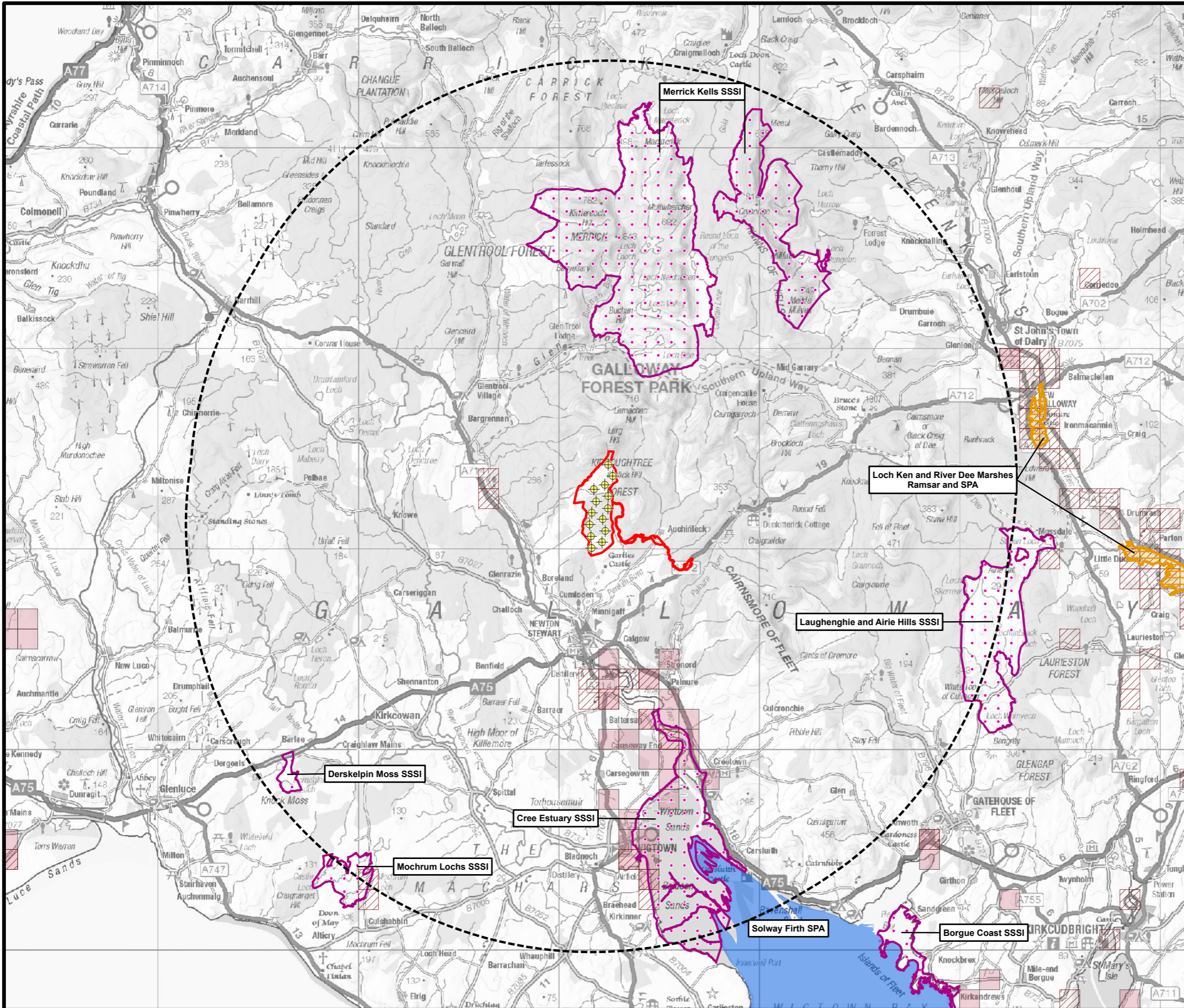


# BLAIR HILL WIND FARM

## FIGURE 9.2

### ORNITHOLOGICAL DESIGNATED SITES WITHIN 20 KM

Reproduced from Ordnance Survey digital data © Crown copyright and database rights 2025. All rights reserved. License number 0100031673. Contains NatureScot information licensed under the Open Government Licence v3.0.



- SITE BOUNDARY
- TURBINE
- ORNITHOLOGICAL DESIGNATED SITES 20KM STUDY AREA
- SITE OF SPECIAL SCIENTIFIC INTEREST (SSSI)
- RAMSAR SITE
- SPECIAL PROTECTION AREAS (SPA)**
  - LOCH KEN AND RIVER DEE MARSHES
  - SOLWAY FIRTH
- GOOSE FORAGING LOCATIONS**

SOURCE: MITCHELL, 2012

  - GREYLAG GOOSE
  - PINK-FOOTED GOOSE



SCALE - 1:185,000 @ A3

### ENVIRONMENTAL IMPACT ASSESSMENT REPORT 2025

THIS DRAWING IS THE PROPERTY OF RENEWABLE ENERGY SYSTEMS LTD. AND NO REPRODUCTION MAY BE MADE IN WHOLE OR IN PART WITHOUT PERMISSION