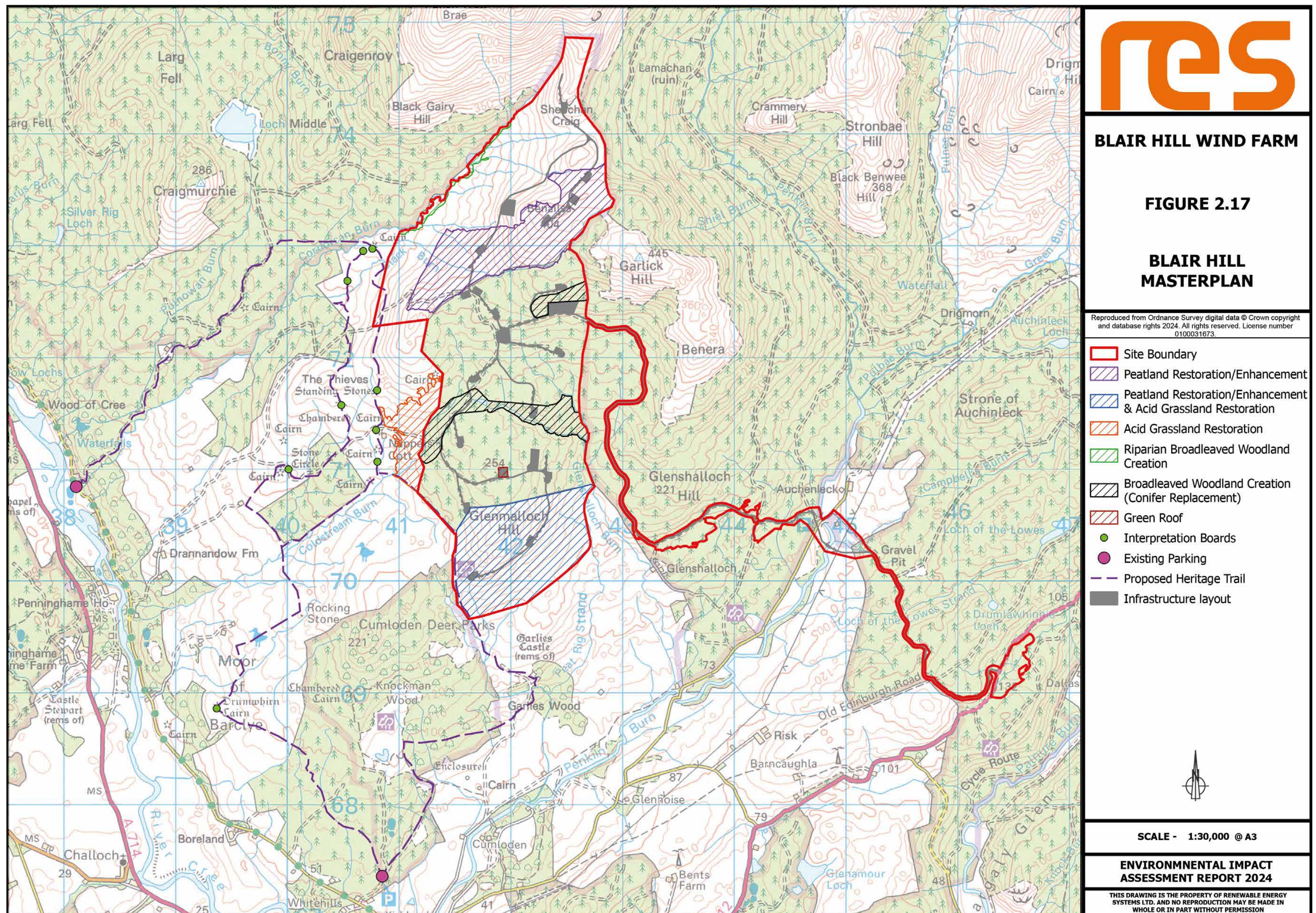


# Blair Hill Masterplan

The below plan shows the Masterplan for the proposed Blair Hill Wind Farm.

Alongside the 14 turbines which would be capable of producing clean, low-cost electricity for over 115,000<sup>1</sup> homes every year, we are proposing various enhancement measures as part of the development. Such measures include:

- Peatland restoration and enhancement
- Conifer replacement
- Riparian Broadleaved woodland creation
- Proposed heritage trail



<sup>1</sup>The homes figure has been calculated by taking the predicted annual electricity generation of the site (based on RES assessments Blair Hill has a predicted capacity factor of 46.3%) and dividing this by the annual average electricity figures from the DESNZ showing that the annual GB average domestic household consumption is 3,239 kWh (January 2024).

**Blair Hill Wind Farm**

[www.blairhill-windfarm.co.uk](http://www.blairhill-windfarm.co.uk)

**RES**  
power for good