

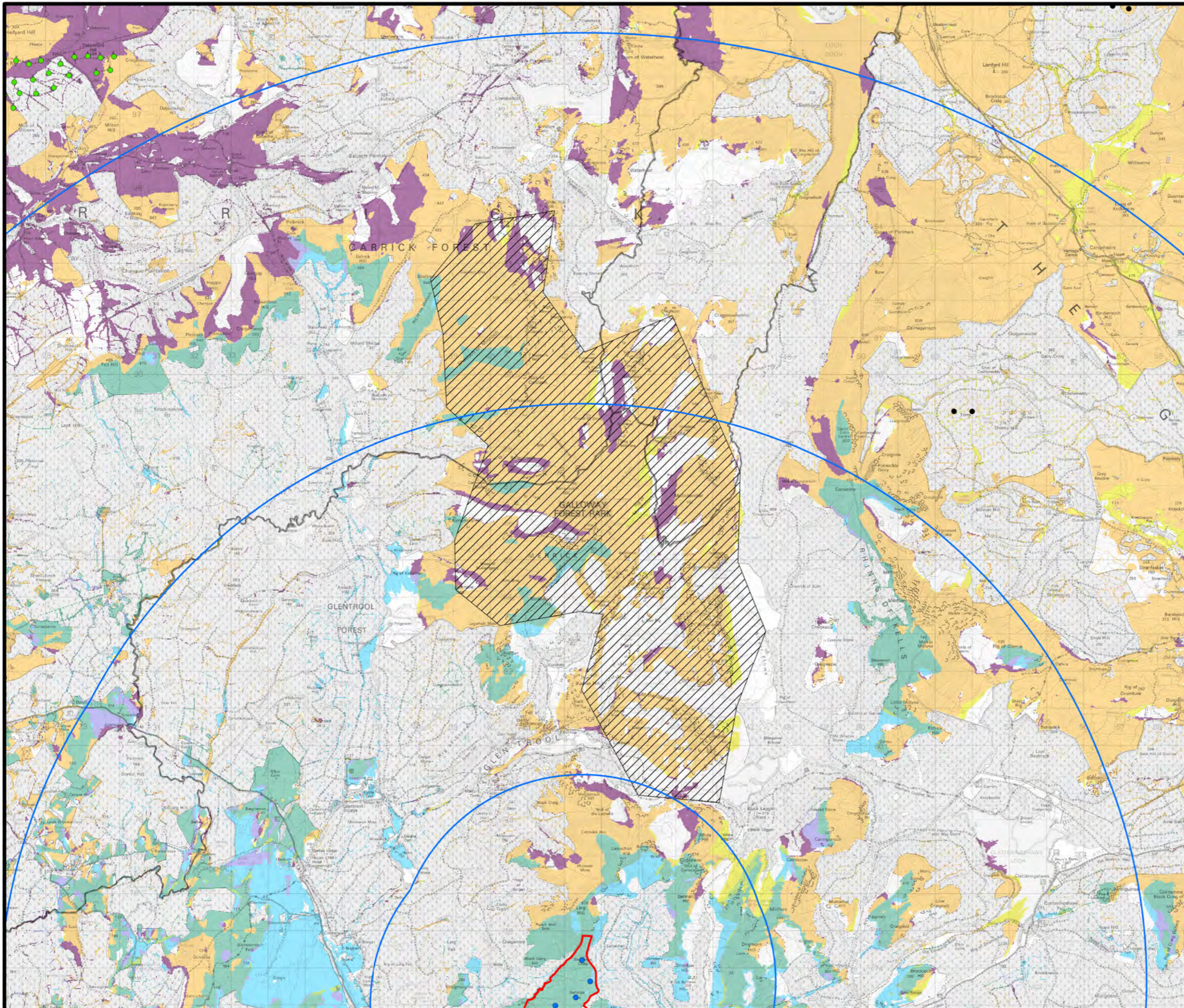


# BLAIR HILL WIND FARM

## TECHNICAL APPENDIX 6.4

### FIGURE 2 WILD LAND AREA AND CUMULATIVE ZONE OF THEORETICAL VISIBILITY (ZTV) STUDY: OPERATIONAL AND CONSENTED SCHEMES - INCLUDING WOODLANDS AND SETTLEMENTS

Reproduced from Ordnance Survey digital data © Crown copyright and database rights 2024. All rights reserved. License number 0100031673.



Proposed Turbines (T1 to T12  
165m hub, 250m tip; T13 and  
T14 125m hub, 210m tip)

- Site Boundary
- Distance from Proposed Turbines (5, 15, 25km)
- Planning Authority Boundaries
- Wild Land

Cumulative Wind Farms

- Operational
- Consented

Zone of Theoretical Visibility (ZTV)  
(computer generated)



SCALE - 1:100,000 @ A3

### ENVIRONMENTAL IMPACT ASSESSMENT REPORT 2024

THIS DRAWING IS THE PROPERTY OF RENEWABLE ENERGY SYSTEMS LTD. AND NO REPRODUCTION MAY BE MADE IN WHOLE OR IN PART WITHOUT PERMISSION