

Note

This Zone of Theoretical Visibility (ZTV) has been generated using ESRI ArcGIS Spatial Analyst extension. The digital terrain model (DTM) has been derived from OS Terrain 50 dataset (+/-10m). Earth curvature has been included in the ZTV calculation and refraction of light has been applied using SNH guidance settings. The ZTV has been generated from a viewing height of 2m above ground level which falls within recommendations by "Visual Representation of Windfarms" prepared for Scottish Natural Heritage (SNH) February 2017 - Version 2.2.

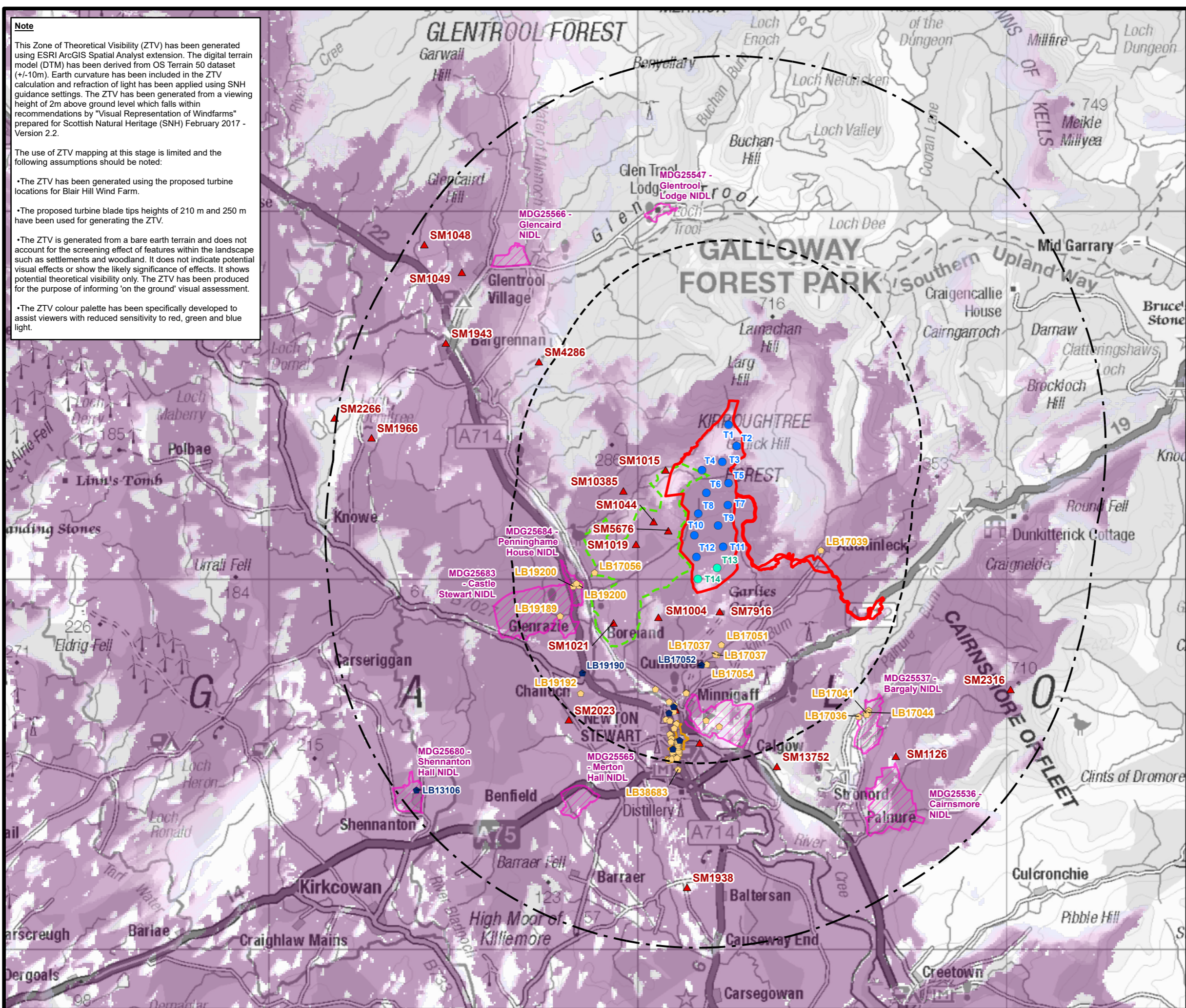
The use of ZTV mapping at this stage is limited and the following assumptions should be noted:

- The ZTV has been generated using the proposed turbine locations for Blair Hill Wind Farm.

- The proposed turbine blade tips heights of 210 m and 250 m have been used for generating the ZTV.

- The ZTV is generated from a bare earth terrain and does not account for the screening effect of features within the landscape such as settlements and woodland. It does not indicate potential visual effects or show the likely significance of effects. It shows potential theoretical visibility only. The ZTV has been produced for the purpose of informing 'on the ground' visual assessment.

- The ZTV colour palette has been specifically developed to assist viewers with reduced sensitivity to red, green and blue light.



BLAIR HILL WIND FARM

FIGURE 7.2

DESIGNATED CULTURAL HERITAGE ASSETS

Reproduced from Ordnance Survey digital data © Crown copyright and database rights 2024. All rights reserved. License number 0100031673.

Contains Data from © Historic Environment Scotland. Contains Ordnance Survey data © Crown copyright and database right 2024. Data obtained through Dumfries and Galloway Council 2023.

- Site Boundary
- Proposed Turbine Location (210 m to Tip)
- Proposed Turbine Location (250 m to Tip)
- Proposed Turbine Location 5 km Buffer
- Proposed Turbine Location 10 km Buffer

- Listed Building (Category)**
- A
 - B
 - ▲ Scheduled Monument Location
 - Conservation Area
 - Dumfries and Galloway Non-Inventoried Designed Landscapes (NIDL)
 - Archaeologically Sensitive Area (ASA)

- Zone of Theoretical Visibility (Bare Earth):
Number of Turbine Blade Tips Visible**
- High : 14 Turbines Visible
 - Low : 1 Turbine Visible



SCALE - 1:100,000 @ A3

ENVIRONMENTAL IMPACT ASSESSMENT REPORT 2024

THIS DRAWING IS THE PROPERTY OF RENEWABLE ENERGY SYSTEMS LTD. AND NO REPRODUCTION MAY BE MADE IN WHOLE OR IN PART WITHOUT PERMISSION