

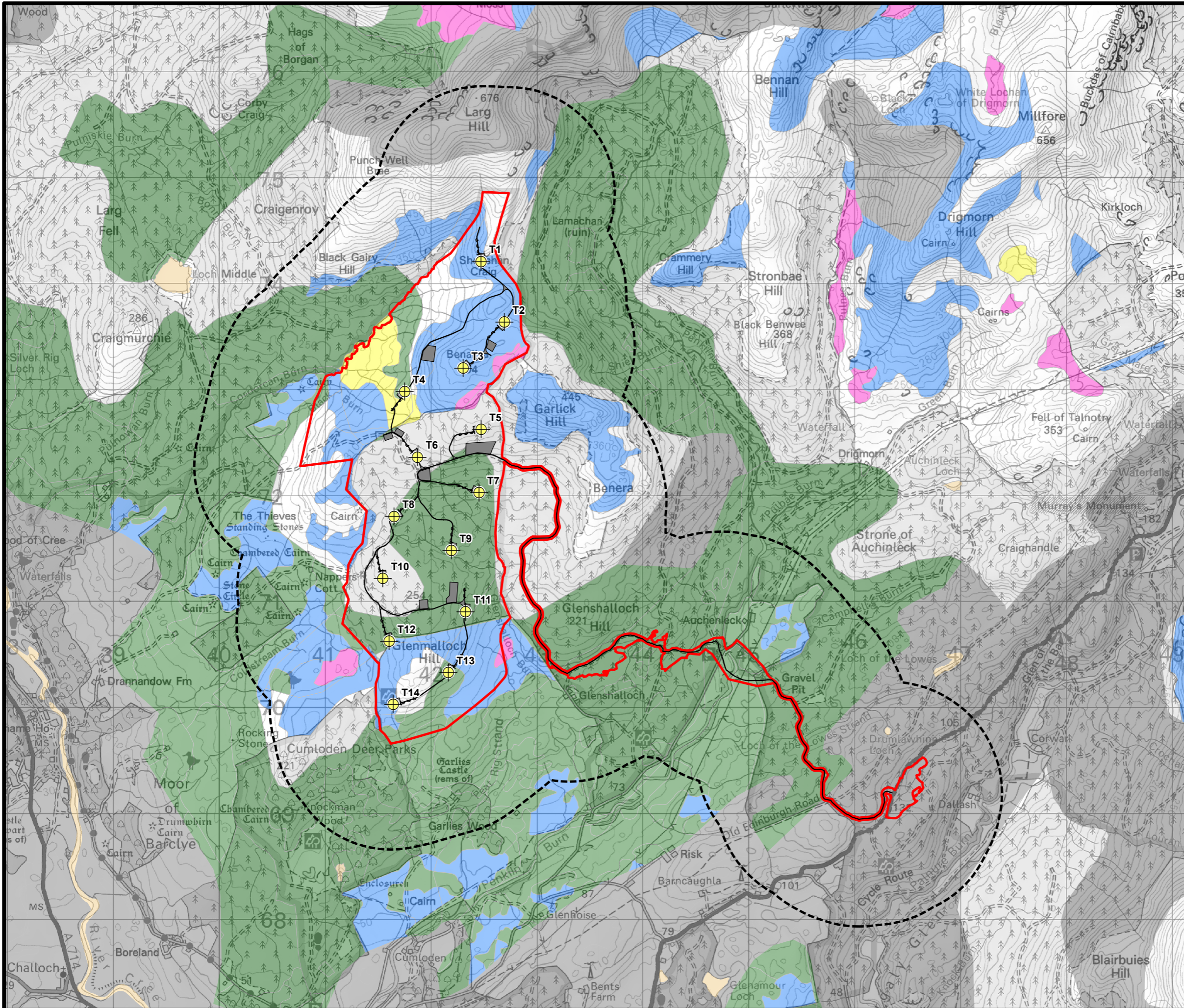


BLAIR HILL WIND FARM

FIGURE 8.2

CARBON AND PEATLAND MAP 2016

Reproduced from Ordnance Survey digital data © Crown copyright and database rights 2025. All rights reserved. License number 0100031673. Contains NatureScot information licensed under the Open Government Licence v3.0.



- SITE BOUNDARY
 - TURBINE
 - INFRASTRUCTURE
 - 1 KM DISTANCE BAND
- CARBON AND PEATLAND 2016**
- Class -2: Non-soil
 - Class 0: Mineral Soil
 - Class 1: Nationally important carbon-rich soils, deep peat and priority peatland habitat. Areas likely to be of high conservation value
 - Class 2: Nationally important carbon-rich soils, deep peat and priority peatland habitat. Areas of potentially high conservation value and restoration potential
 - Class 3: Dominant vegetation cover is not priority peatland habitat but is associated with wet and acidic type. Occasional peatland habitats can be found. Most soils are carbon-rich soils, with some areas of deep peat
 - Class 4: Area unlikely to be associated with peatland habitats or wet and acidic type. Area unlikely to include carbon-rich soils
 - Class 5: Soil information takes precedence over vegetation data. No peatland habitat recorded. May also include areas of bare soil. Soils are carbon-rich and deep peat



SCALE - 1:35,000 @ A3

ENVIRONMENTAL IMPACT ASSESSMENT REPORT 2025

THIS DRAWING IS THE PROPERTY OF RENEWABLE ENERGY SYSTEMS LTD. AND NO REPRODUCTION MAY BE MADE IN WHOLE OR IN PART WITHOUT PERMISSION