

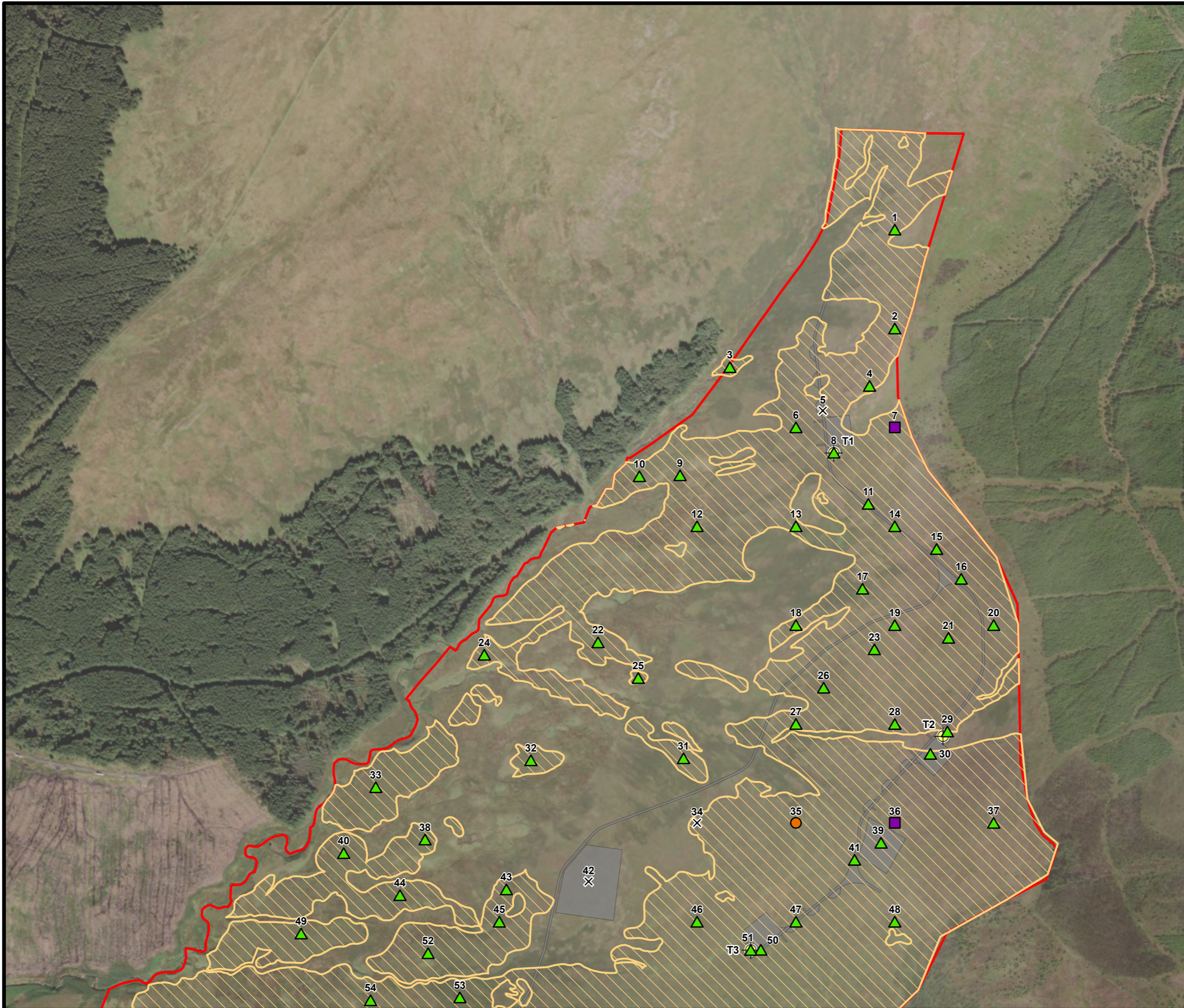
BLAIR HILL WIND FARM

FIGURE 8.5.1

PEATLAND CONDITION CLASSIFICATION

Aerial: Maxar, Microsoft.

- SITE BOUNDARY
 - TURBINE
 - INFRASTRUCTURE
 - PEATLAND CONDITION SURVEY AREA
- PEATLAND CONDITION**
- ACTIVELY ERODING: HAGG/GULLY
 - DRAINED: ARTIFICIAL
 - DRAINED: HAGG/GULLY
 - MODIFIED
 - NOT PEATLAND



SCALE - 1:7,500 @ A3

ENVIRONMENTAL IMPACT ASSESSMENT REPORT 2025

THIS DRAWING IS THE PROPERTY OF RENEWABLE ENERGY SYSTEMS LTD. AND NO REPRODUCTION MAY BE MADE IN WHOLE OR IN PART WITHOUT PERMISSION



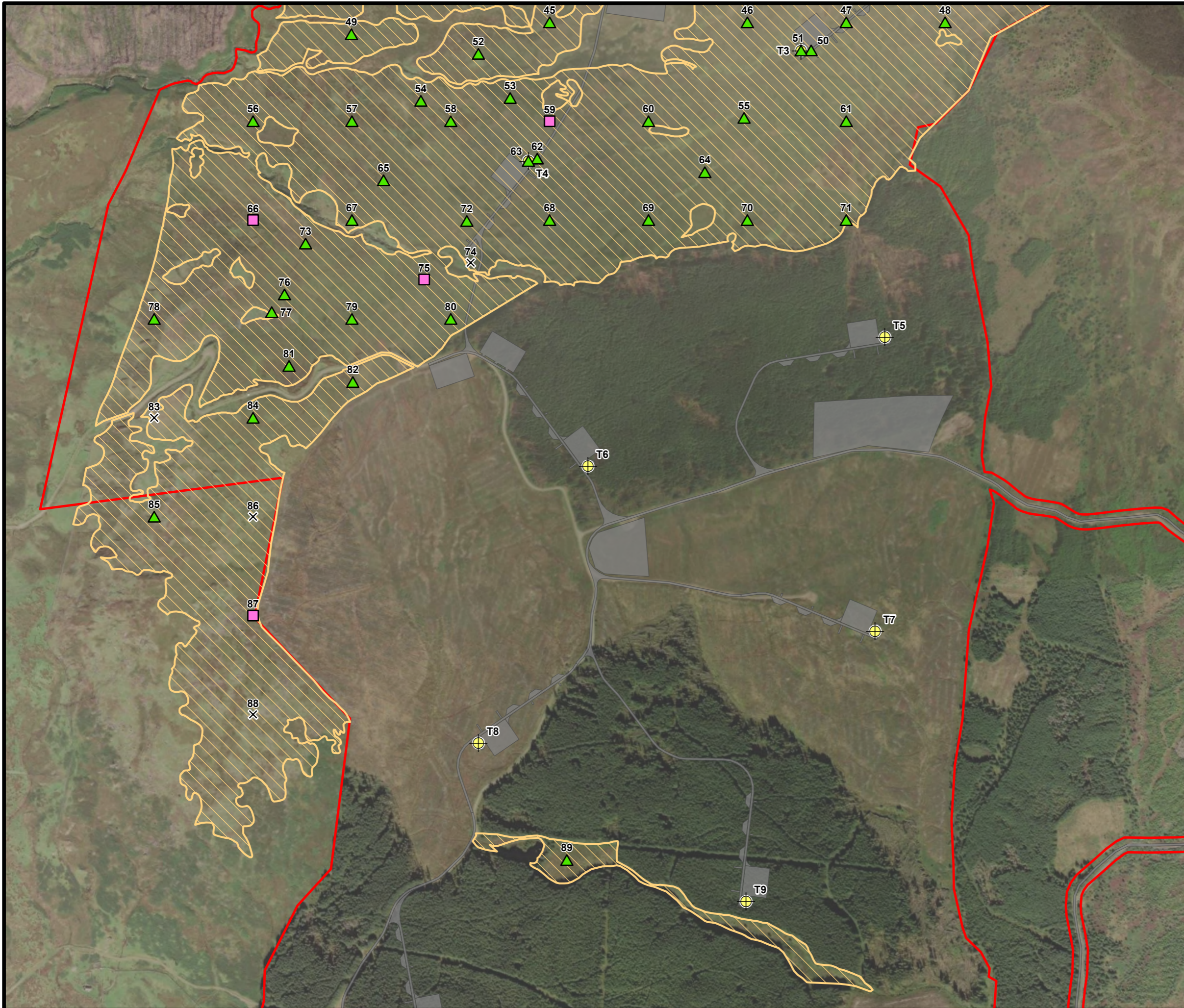
BLAIR HILL WIND FARM

FIGURE 8.5.2

PEATLAND CONDITION CLASSIFICATION

Aerial: Maxar, Microsoft.

- SITE BOUNDARY
 - TURBINE
 - INFRASTRUCTURE
 - PEATLAND CONDITION SURVEY AREA
- PEATLAND CONDITION**
- ACTIVELY ERODING: HAGG/GULLY
 - DRAINED: ARTIFICIAL
 - DRAINED: HAGG/GULLY
 - MODIFIED
 - NOT PEATLAND



SCALE - 1:7,500 @ A3

ENVIRONMENTAL IMPACT ASSESSMENT REPORT 2025

THIS DRAWING IS THE PROPERTY OF RENEWABLE ENERGY SYSTEMS LTD. AND NO REPRODUCTION MAY BE MADE IN WHOLE OR IN PART WITHOUT PERMISSION












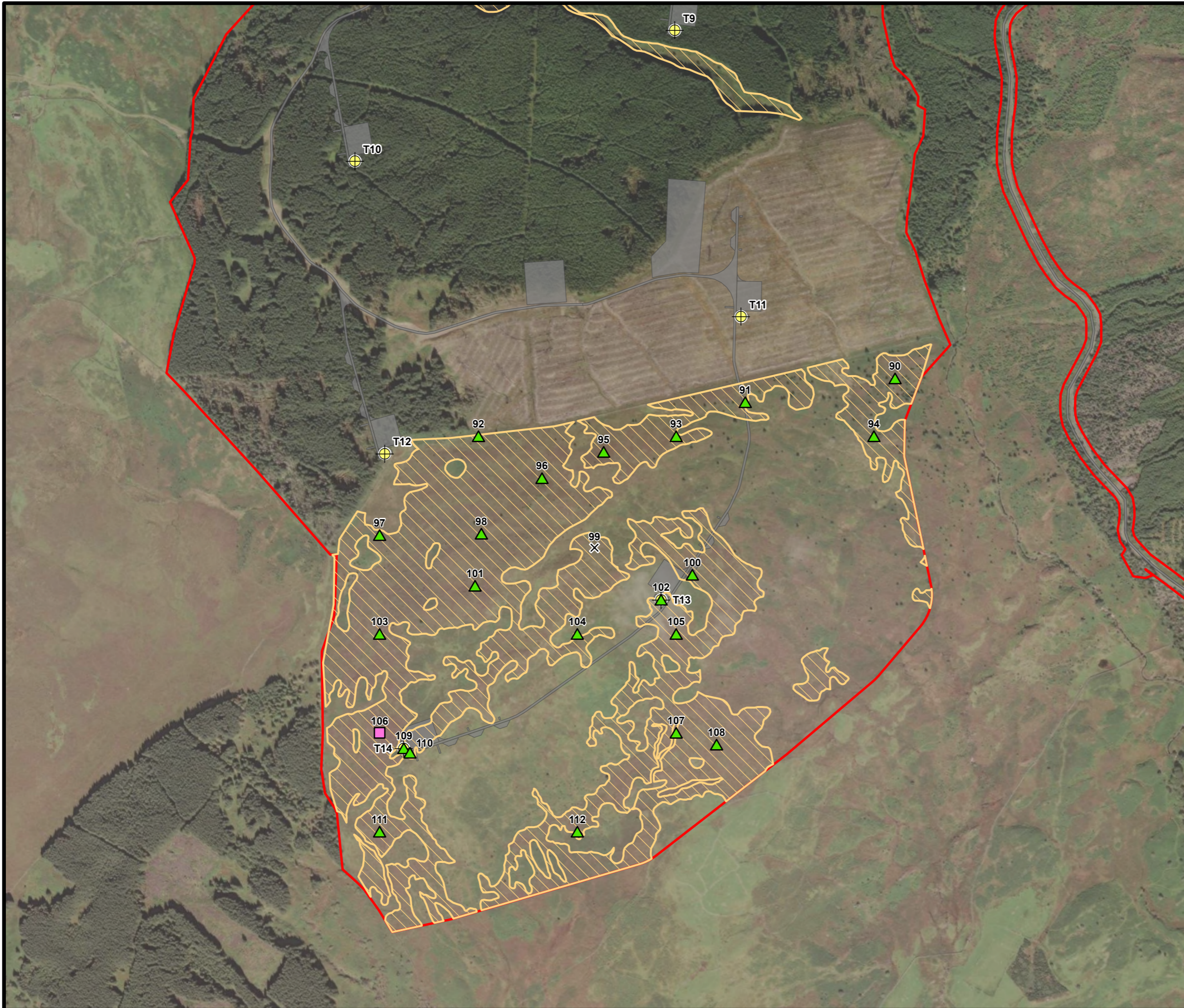
BLAIR HILL WIND FARM

FIGURE 8.5.3

PEATLAND CONDITION CLASSIFICATION

Aerial: Maxar, Microsoft.

-  SITE BOUNDARY
 -  TURBINE
 -  INFRASTRUCTURE
 -  PEATLAND CONDITION SURVEY AREA
- PEATLAND CONDITION**
-  ACTIVELY ERODING: HAGG/GULLY
 -  DRAINED: ARTIFICIAL
 -  DRAINED: HAGG/GULLY
 -  MODIFIED
 -  NOT PEATLAND



SCALE - 1:7,500 @ A3

ENVIRONMENTAL IMPACT
ASSESSMENT REPORT 2025

THIS DRAWING IS THE PROPERTY OF RENEWABLE ENERGY SYSTEMS LTD. AND NO REPRODUCTION MAY BE MADE IN WHOLE OR IN PART WITHOUT PERMISSION