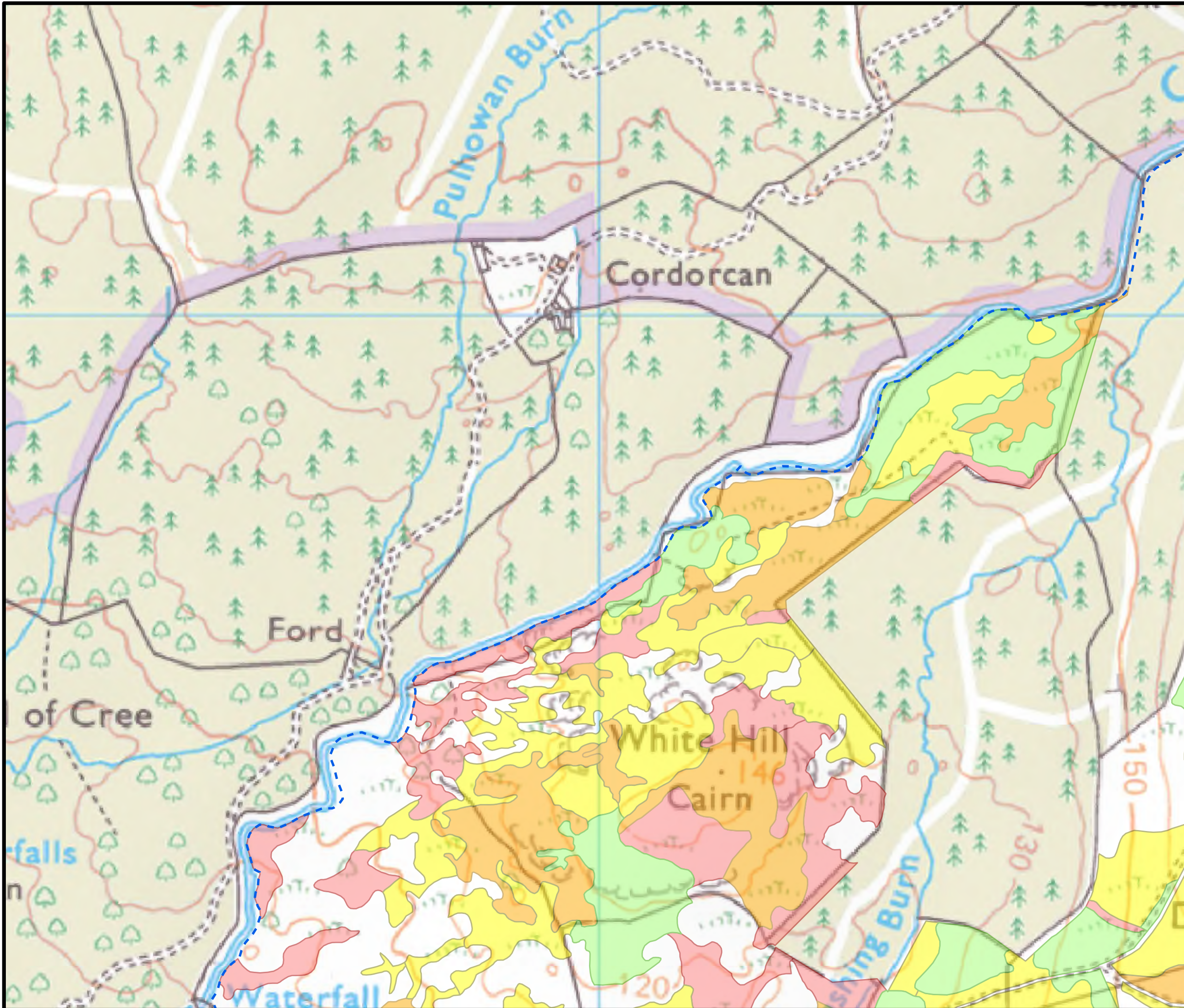


BLAIR HILL WIND FARM

FIGURE 8.4.1

**POTENTIAL GROUNDWATER
DEPENDENT TERRESTRIAL
ECOSYSTEMS (GWDTES)**

Reproduced from Ordnance Survey digital data © Crown copyright and database rights 2025. All rights reserved. License number 0100031673.



GWLTE SURVEY AREA

POTENTIAL GWLTE

- HIGHLY DOMINANT
- HIGHLY SUB-DOMINANT
- MODERATELY DOMINANT
- MODERATELY SUB-DOMINANT



MacArthur Green

SCALE - 1:5,000 @ A3

**ENVIRONMENTAL IMPACT
ASSESSMENT REPORT 2025**

THIS DRAWING IS THE PROPERTY OF RENEWABLE ENERGY SYSTEMS LTD. AND NO REPRODUCTION MAY BE MADE IN WHOLE OR IN PART WITHOUT PERMISSION



BLAIR HILL WIND FARM

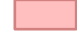


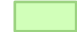
FIGURE 8.4.2

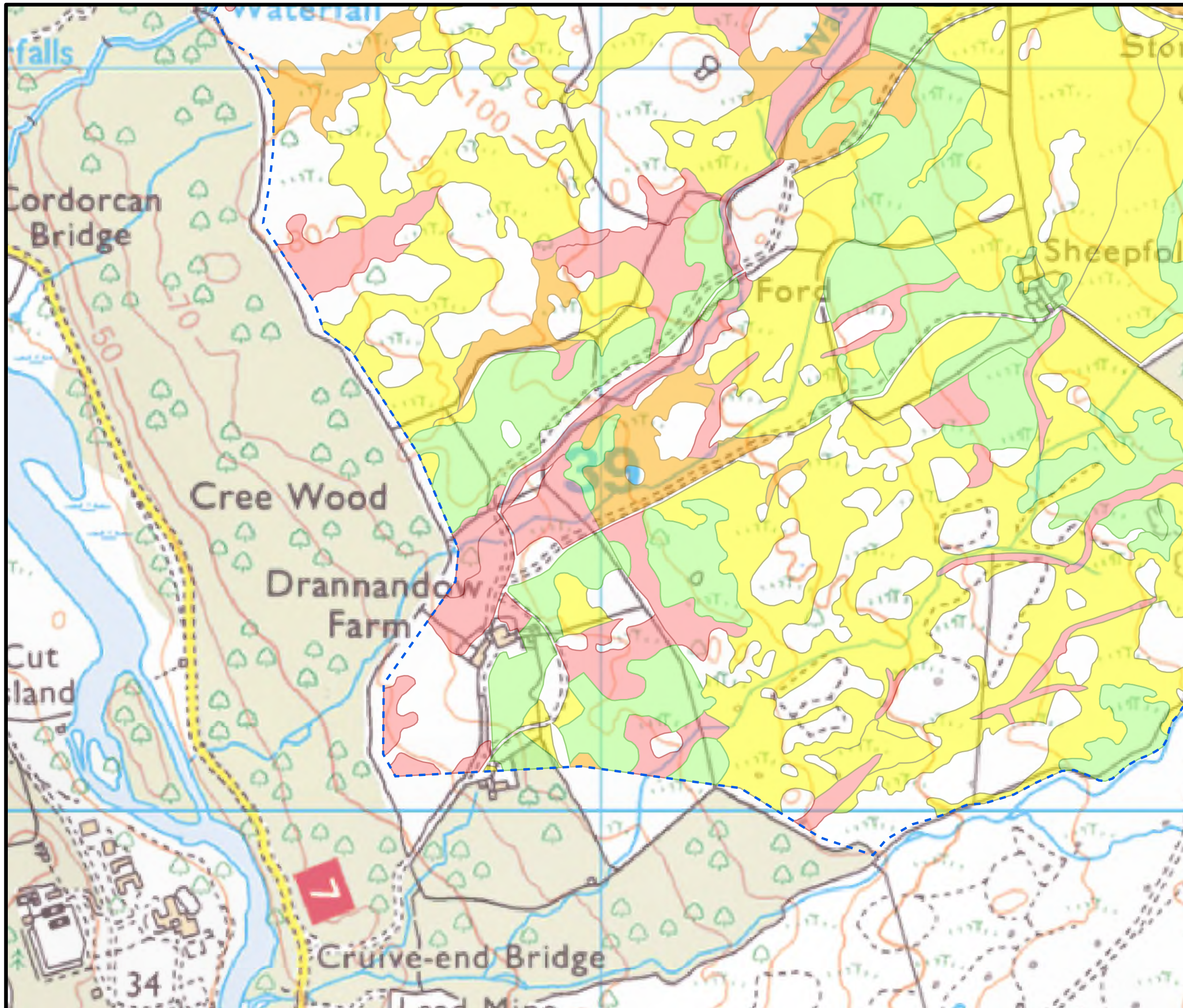
**POTENTIAL GROUNDWATER
DEPENDENT TERRESTRIAL
ECOSYSTEMS (GWDTES)**

Reproduced from Ordnance Survey digital data © Crown copyright and database rights 2025. All rights reserved. License number 0100031673.

 GWDTE SURVEY AREA

POTENTIAL GWDTE

-  HIGHLY DOMINANT
-  HIGHLY SUB-DOMINANT
-  MODERATELY DOMINANT
-  MODERATELY SUB-DOMINANT



SCALE - 1:5,000 @ A3

**ENVIRONMENTAL IMPACT
ASSESSMENT REPORT 2025**

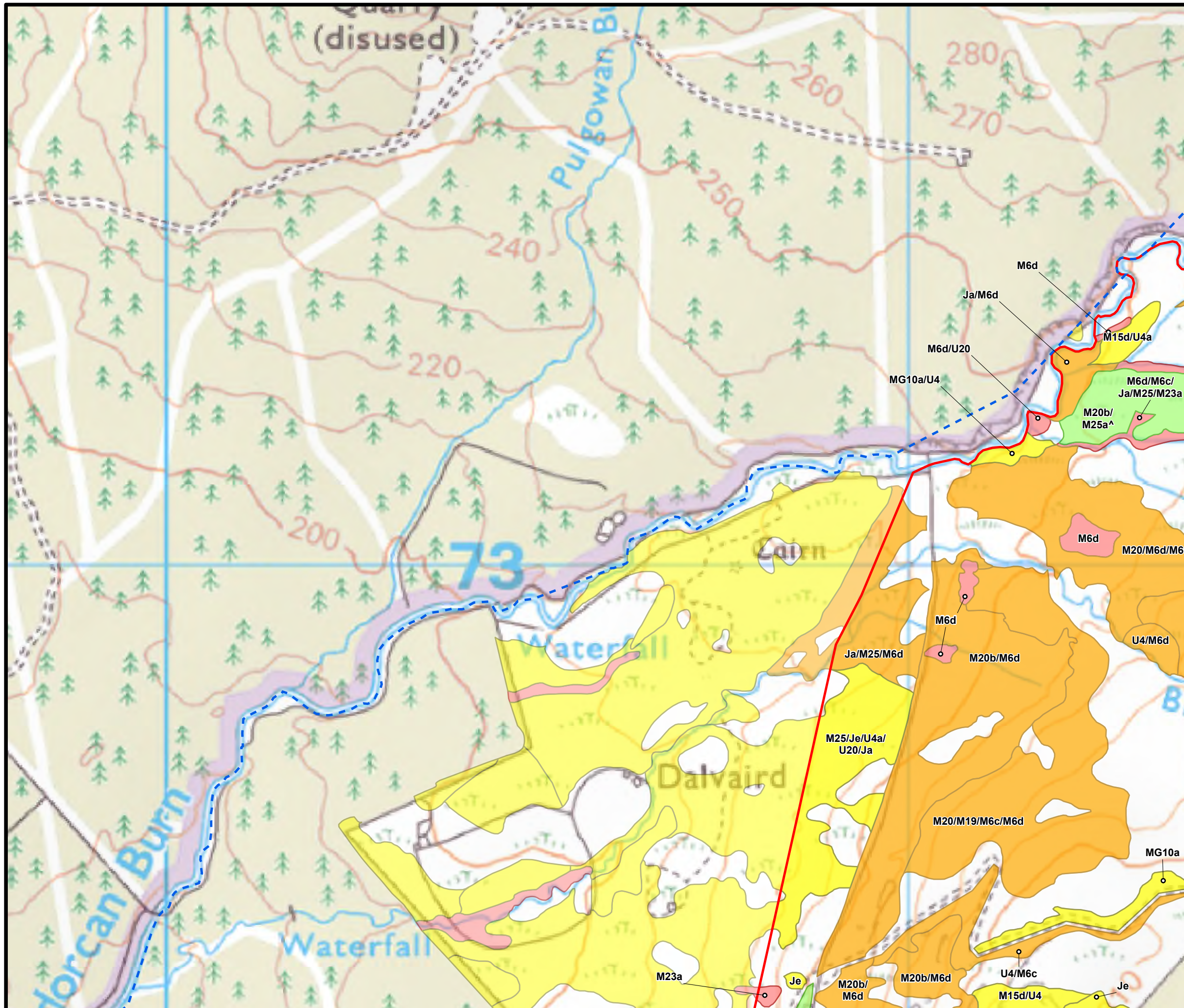
THIS DRAWING IS THE PROPERTY OF RENEWABLE ENERGY SYSTEMS LTD. AND NO REPRODUCTION MAY BE MADE IN WHOLE OR IN PART WITHOUT PERMISSION

BLAIR HILL WIND FARM

FIGURE 8.4.3

POTENTIAL GROUNDWATER DEPENDENT TERRESTRIAL ECOSYSTEMS (GWDTES)

Reproduced from Ordnance Survey digital data © Crown copyright and database rights 2025. All rights reserved. License number 0100031673.



- SITE BOUNDARY
- GWDTES SURVEY AREA
- POTENTIAL GWDTES**
- HIGHLY DOMINANT
- HIGHLY SUB-DOMINANT
- MODERATELY DOMINANT
- MODERATELY SUB-DOMINANT



MacArthur Green

SCALE - 1:5,000 @ A3

ENVIRONMENTAL IMPACT ASSESSMENT REPORT 2025

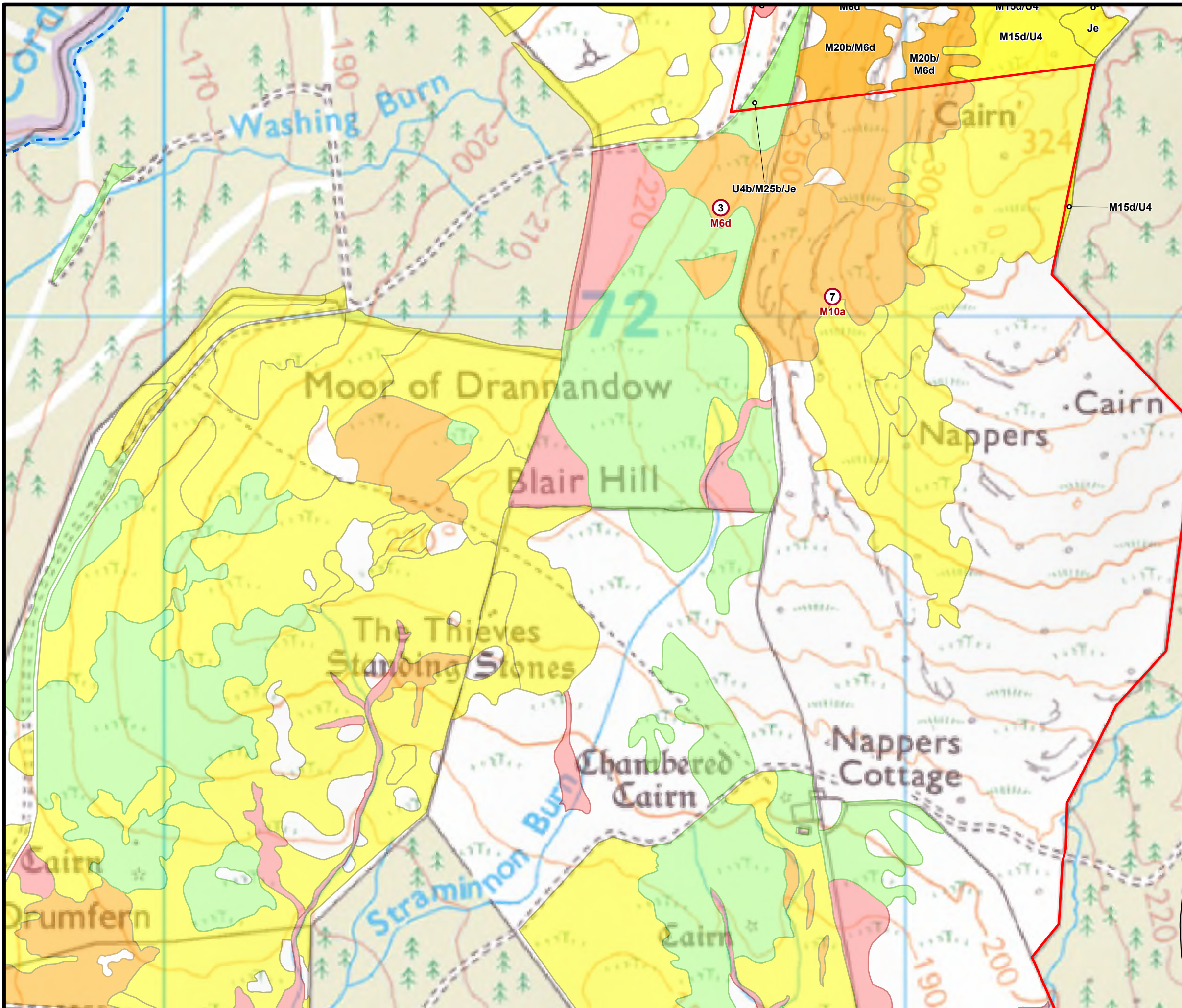
THIS DRAWING IS THE PROPERTY OF RENEWABLE ENERGY SYSTEMS LTD. AND NO REPRODUCTION MAY BE MADE IN WHOLE OR IN PART WITHOUT PERMISSION

BLAIR HILL WIND FARM

FIGURE 8.4.4

POTENTIAL GROUNDWATER DEPENDENT TERRESTRIAL ECOSYSTEMS (GWDTES)

Reproduced from Ordnance Survey digital data © Crown copyright and database rights 2025. All rights reserved. License number 0100031673.



- SITE BOUNDARY
- INFRASTRUCTURE
- GWDTES SURVEY AREA
- HABITAT TARGET NOTE
- POTENTIAL GWDTES**
- HIGHLY DOMINANT
- HIGHLY SUB-DOMINANT
- MODERATELY DOMINANT
- MODERATELY SUB-DOMINANT

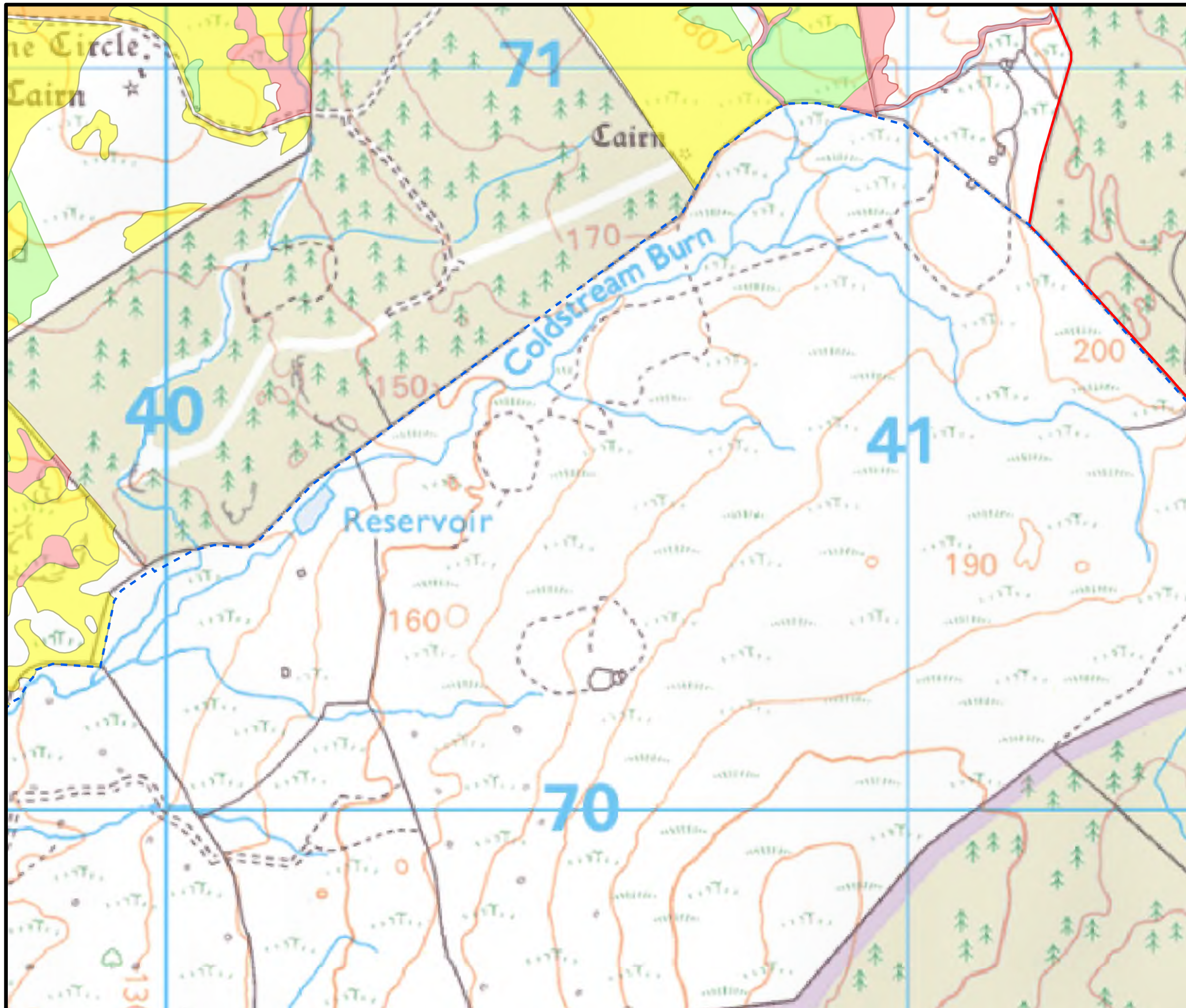


MacArthur Green

SCALE - 1:5,000 @ A3

ENVIRONMENTAL IMPACT ASSESSMENT REPORT 2025

THIS DRAWING IS THE PROPERTY OF RENEWABLE ENERGY SYSTEMS LTD. AND NO REPRODUCTION MAY BE MADE IN WHOLE OR IN PART WITHOUT PERMISSION



BLAIR HILL WIND FARM

FIGURE 8.4.5

POTENTIAL GROUNDWATER DEPENDENT TERRESTRIAL ECOSYSTEMS (GWDTES)

Reproduced from Ordnance Survey digital data © Crown copyright and database rights 2025. All rights reserved. License number 0100031673.

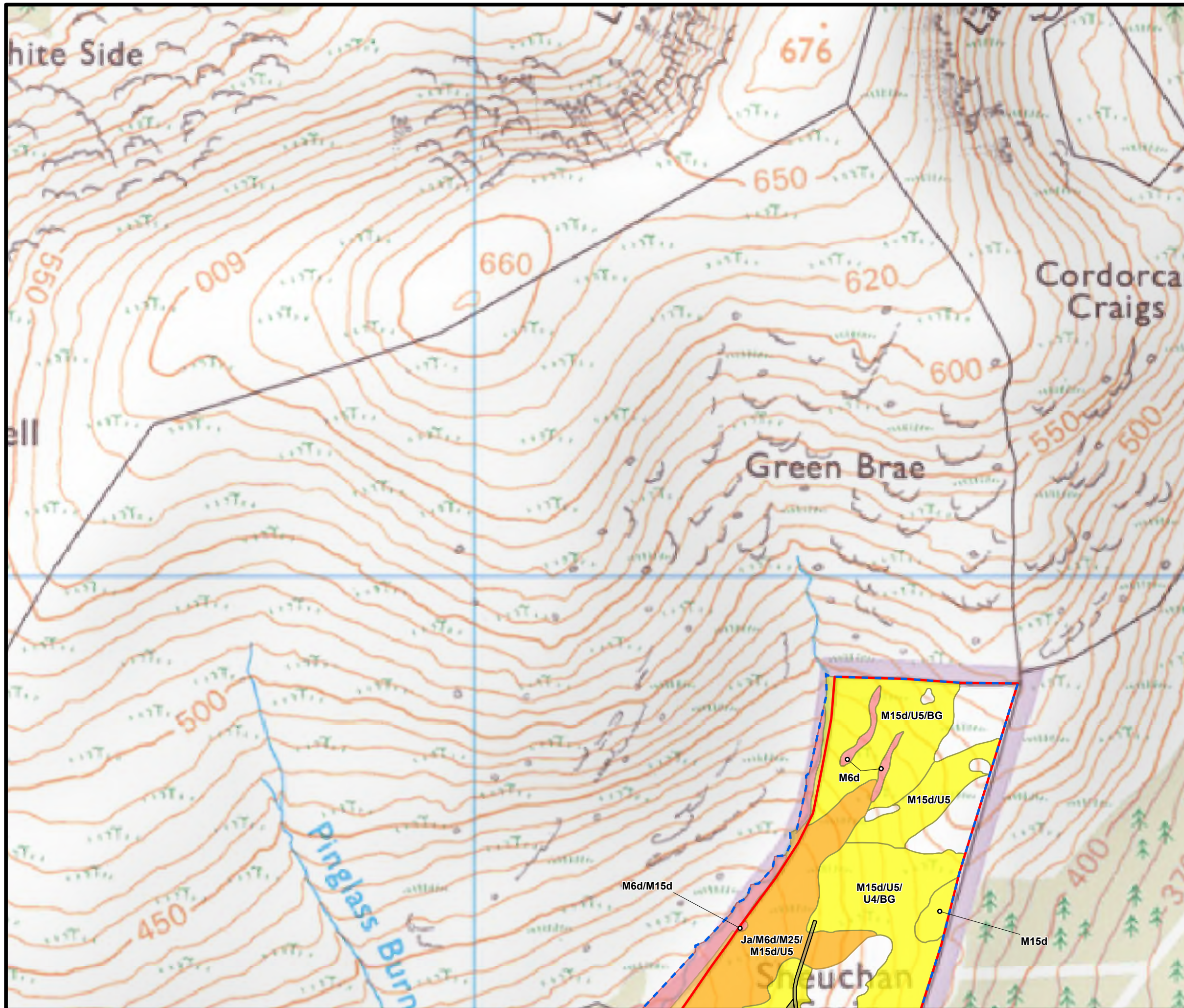
- SITE BOUNDARY
- GWDE SURVEY AREA
- POTENTIAL GWDE**
- HIGHLY DOMINANT
- HIGHLY SUB-DOMINANT
- MODERATELY DOMINANT
- MODERATELY SUB-DOMINANT



SCALE - 1:5,000 @ A3

ENVIRONMENTAL IMPACT ASSESSMENT REPORT 2025

THIS DRAWING IS THE PROPERTY OF RENEWABLE ENERGY SYSTEMS LTD. AND NO REPRODUCTION MAY BE MADE IN WHOLE OR IN PART WITHOUT PERMISSION



BLAIR HILL WIND FARM

FIGURE 8.4.6

POTENTIAL GROUNDWATER DEPENDENT TERRESTRIAL ECOSYSTEMS (GWDTES)

Reproduced from Ordnance Survey digital data © Crown copyright and database rights 2025. All rights reserved. License number 0100031673.

- SITE BOUNDARY
- INFRASTRUCTURE
- GWDTES SURVEY AREA
- POTENTIAL GWDTES**
- HIGHLY DOMINANT
- HIGHLY SUB-DOMINANT
- MODERATELY DOMINANT



SCALE - 1:5,000 @ A3

ENVIRONMENTAL IMPACT ASSESSMENT REPORT 2025

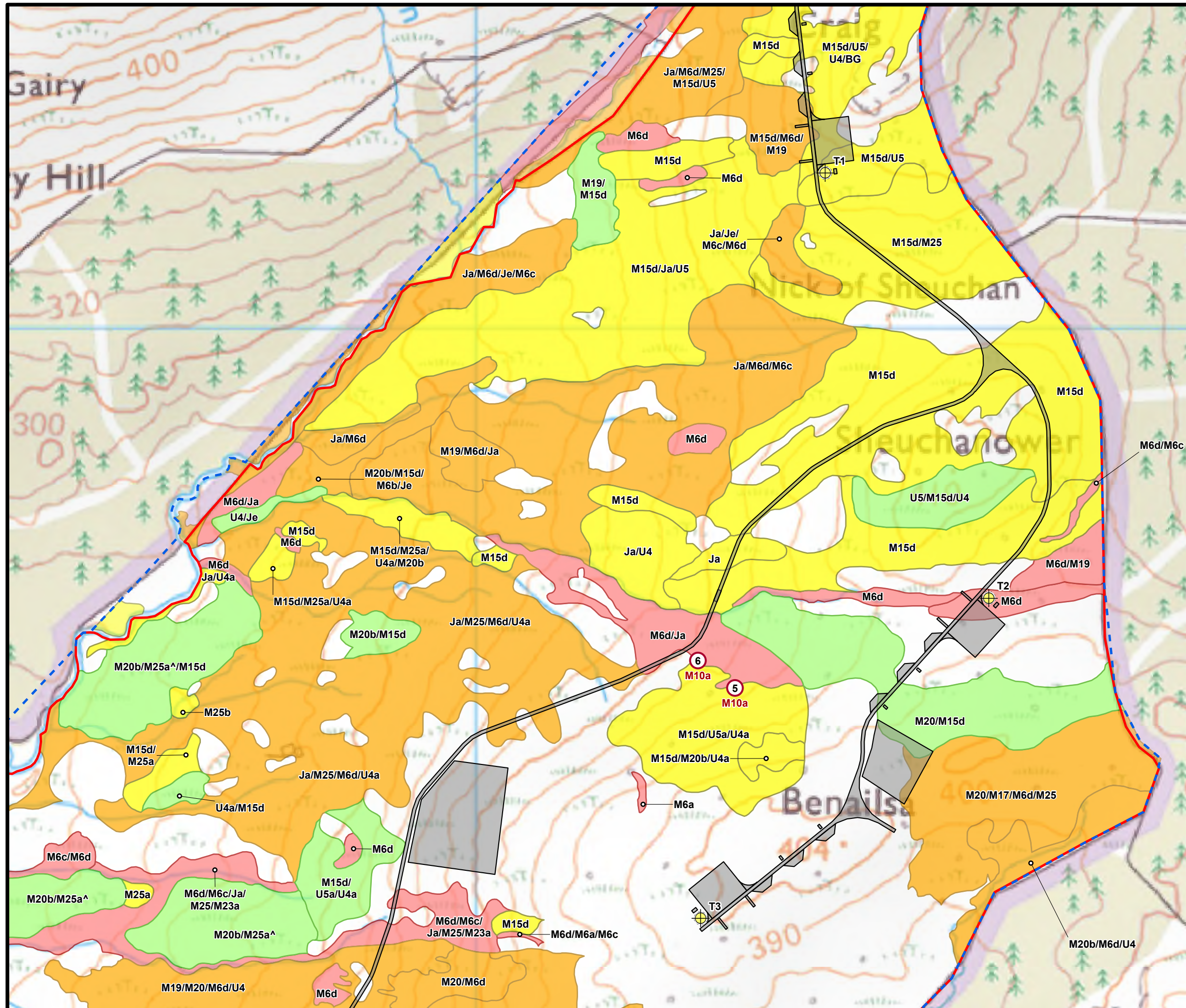
THIS DRAWING IS THE PROPERTY OF RENEWABLE ENERGY SYSTEMS LTD. AND NO REPRODUCTION MAY BE MADE IN WHOLE OR IN PART WITHOUT PERMISSION

BLAIR HILL WIND FARM

FIGURE 8.4.7

POTENTIAL GROUNDWATER DEPENDENT TERRESTRIAL ECOSYSTEMS (GWDTES)

Reproduced from Ordnance Survey digital data © Crown copyright and database rights 2025. All rights reserved. License number 0100031673.



- SITE BOUNDARY
 - + TURBINE
 - INFRASTRUCTURE
 - GWDTES SURVEY AREA
 - HABITAT TARGET NOTE
- POTENTIAL GWDTES**
- HIGHLY DOMINANT
 - HIGHLY SUB-DOMINANT
 - MODERATELY DOMINANT
 - MODERATELY SUB-DOMINANT



SCALE - 1:5,000 @ A3

ENVIRONMENTAL IMPACT ASSESSMENT REPORT 2025

THIS DRAWING IS THE PROPERTY OF RENEWABLE ENERGY SYSTEMS LTD. AND NO REPRODUCTION MAY BE MADE IN WHOLE OR IN PART WITHOUT PERMISSION

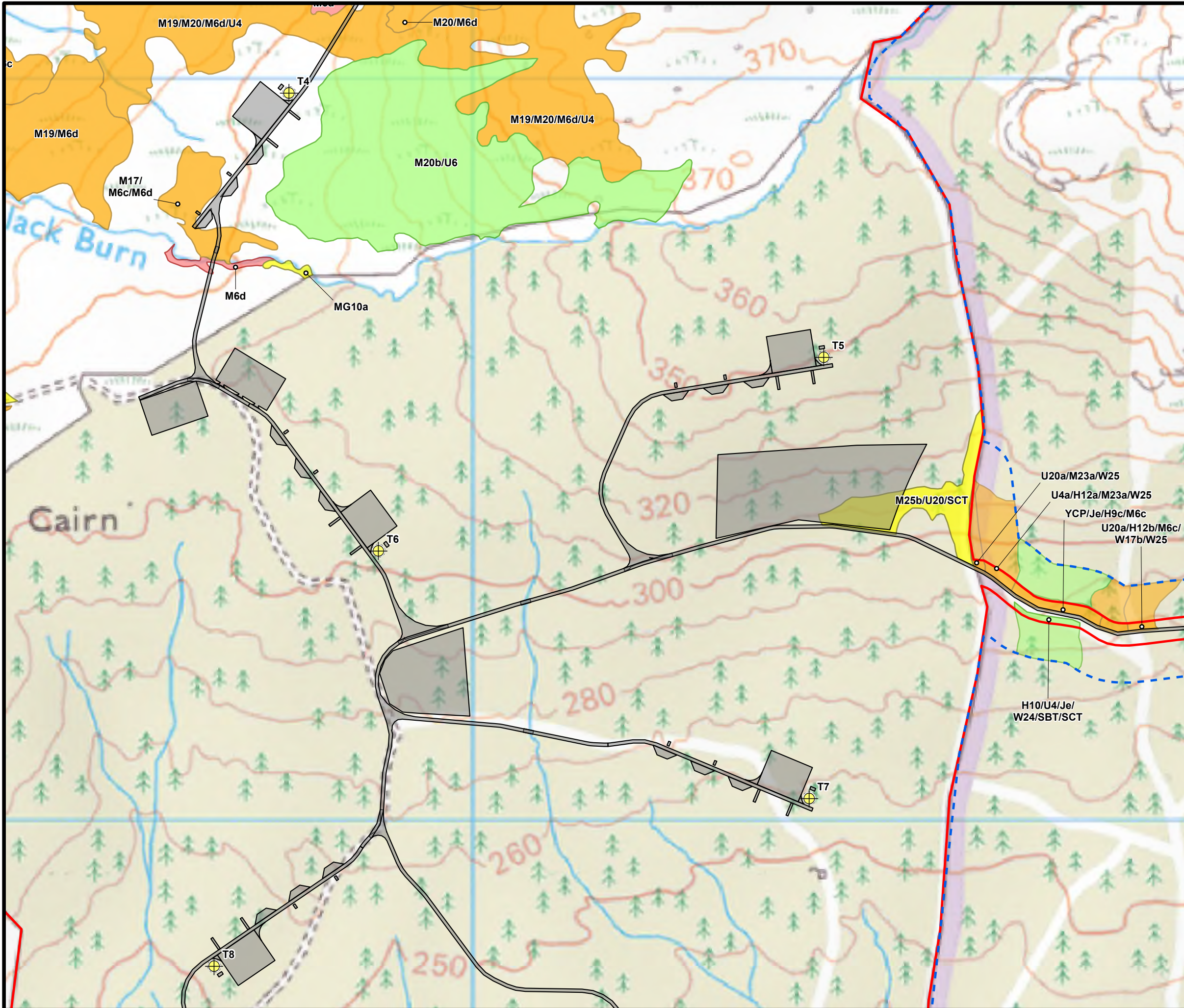


BLAIR HILL WIND FARM

FIGURE 8.4.8

POTENTIAL GROUNDWATER DEPENDENT TERRESTRIAL ECOSYSTEMS (GWDTEs)

Reproduced from Ordnance Survey digital data © Crown copyright and database rights 2025. All rights reserved. License number 0100031673.



- SITE BOUNDARY
- TURBINE
- INFRASTRUCTURE
- GWDTE SURVEY AREA
- POTENTIAL GWDTE**
- HIGHLY DOMINANT
- HIGHLY SUB-DOMINANT
- MODERATELY DOMINANT
- MODERATELY SUB-DOMINANT



SCALE - 1:5,000 @ A3

ENVIRONMENTAL IMPACT ASSESSMENT REPORT 2025

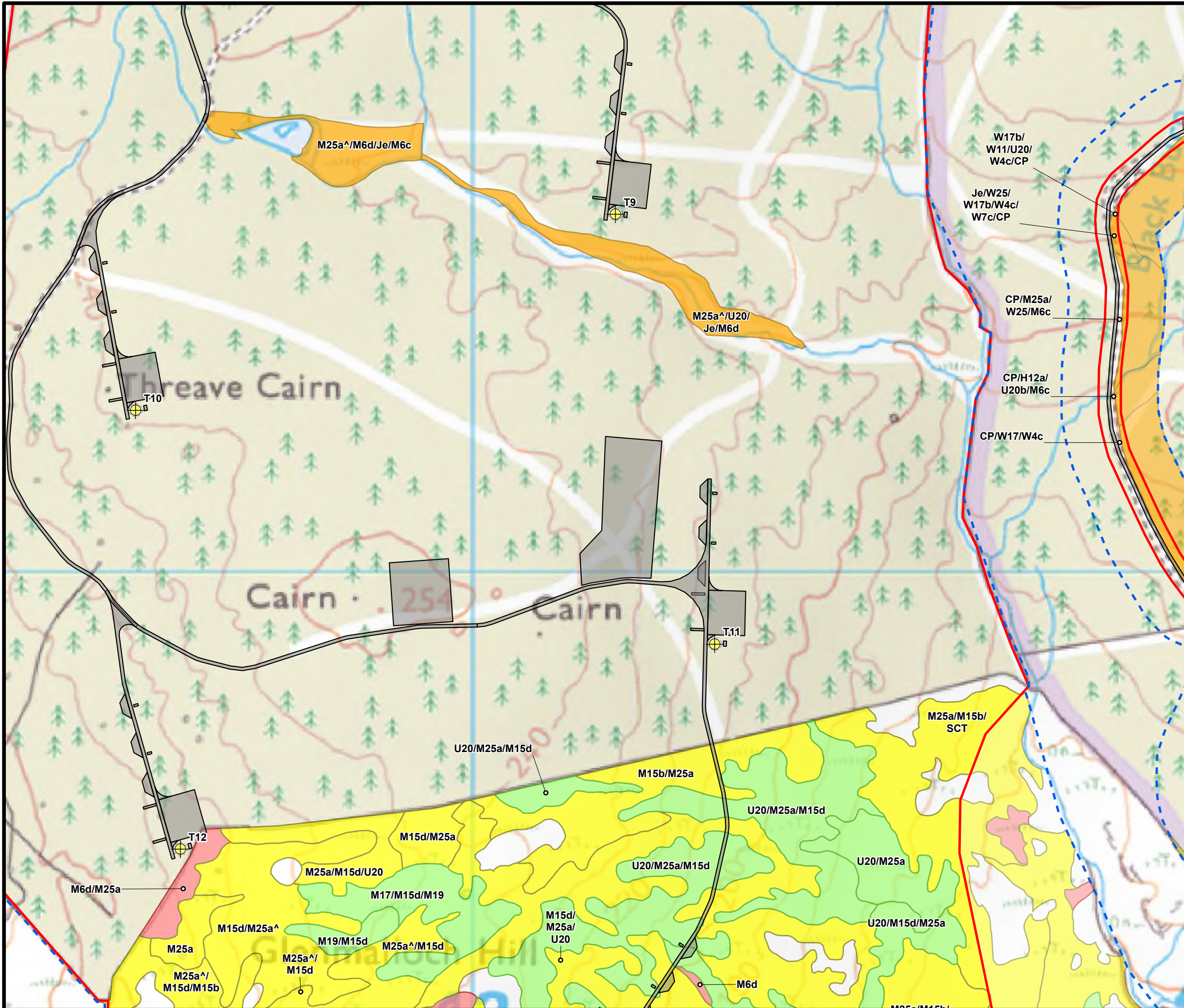
THIS DRAWING IS THE PROPERTY OF RENEWABLE ENERGY SYSTEMS LTD. AND NO REPRODUCTION MAY BE MADE IN WHOLE OR IN PART WITHOUT PERMISSION

BLAIR HILL WIND FARM

FIGURE 8.4.9

POTENTIAL GROUNDWATER DEPENDENT TERRESTRIAL ECOSYSTEMS (GWDTES)

Reproduced from Ordnance Survey digital data © Crown copyright and database rights 2025. All rights reserved. License number 0100031673.



- SITE BOUNDARY
- +

 TURBINE
- INFRASTRUCTURE
- GWDTES SURVEY AREA
- POTENTIAL GWDTES**
- HIGHLY DOMINANT
- HIGHLY SUB-DOMINANT
- MODERATELY DOMINANT
- MODERATELY SUB-DOMINANT



SCALE - 1:5,000 @ A3

ENVIRONMENTAL IMPACT ASSESSMENT REPORT 2025

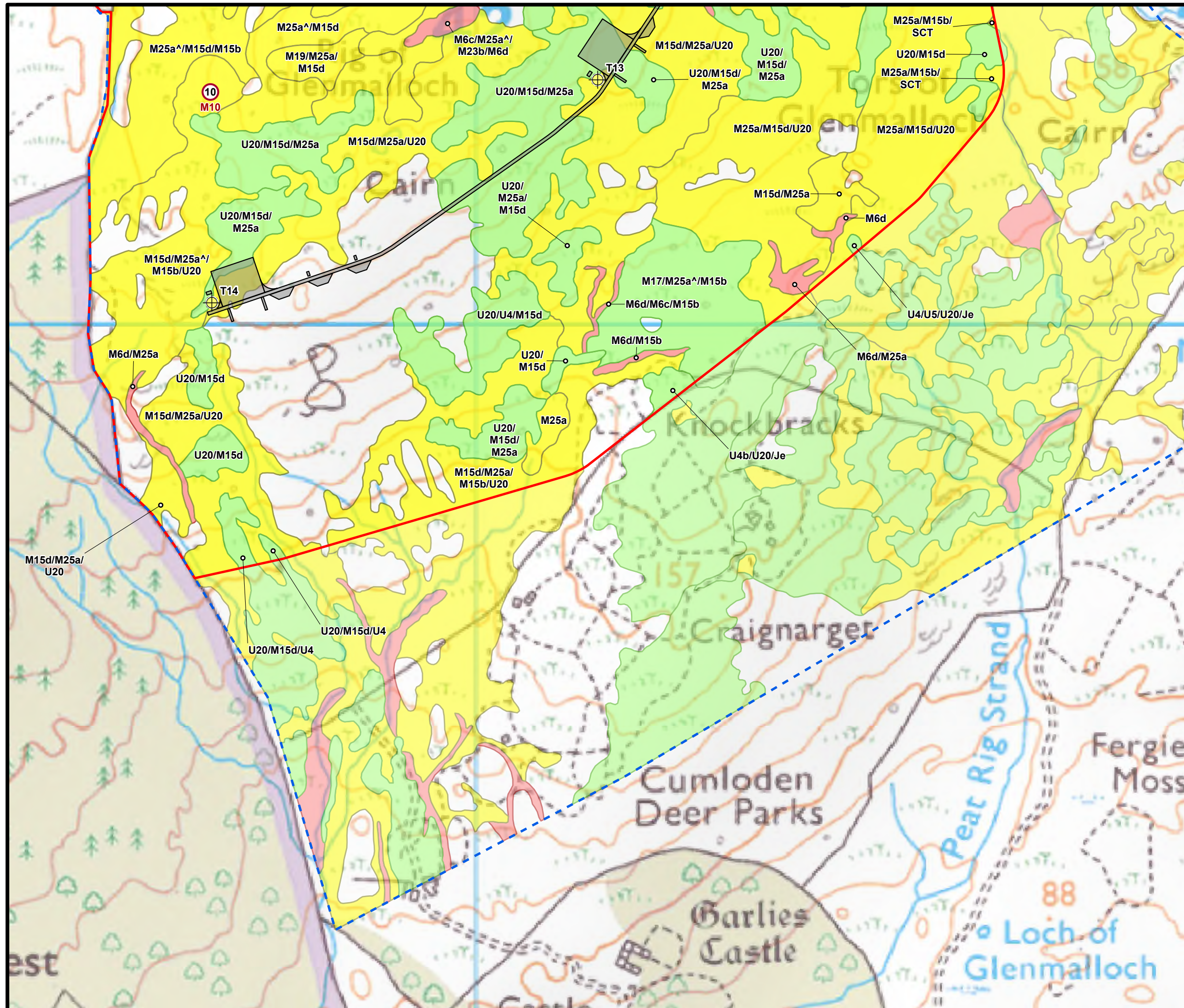
THIS DRAWING IS THE PROPERTY OF RENEWABLE ENERGY SYSTEMS LTD. AND NO REPRODUCTION MAY BE MADE IN WHOLE OR IN PART WITHOUT PERMISSION

BLAIR HILL WIND FARM

FIGURE 8.4.10

POTENTIAL GROUNDWATER DEPENDENT TERRESTRIAL ECOSYSTEMS (GWDTES)

Reproduced from Ordnance Survey digital data © Crown copyright and database rights 2025. All rights reserved. License number 0100031673.



- SITE BOUNDARY
 - TURBINE
 - INFRASTRUCTURE
 - GWLTE SURVEY AREA
 - HABITAT TARGET NOTE
- POTENTIAL GWLTE**
- HIGHLY DOMINANT
 - MODERATELY DOMINANT
 - MODERATELY SUB-DOMINANT



SCALE - 1:5,000 @ A3

ENVIRONMENTAL IMPACT ASSESSMENT REPORT 2025

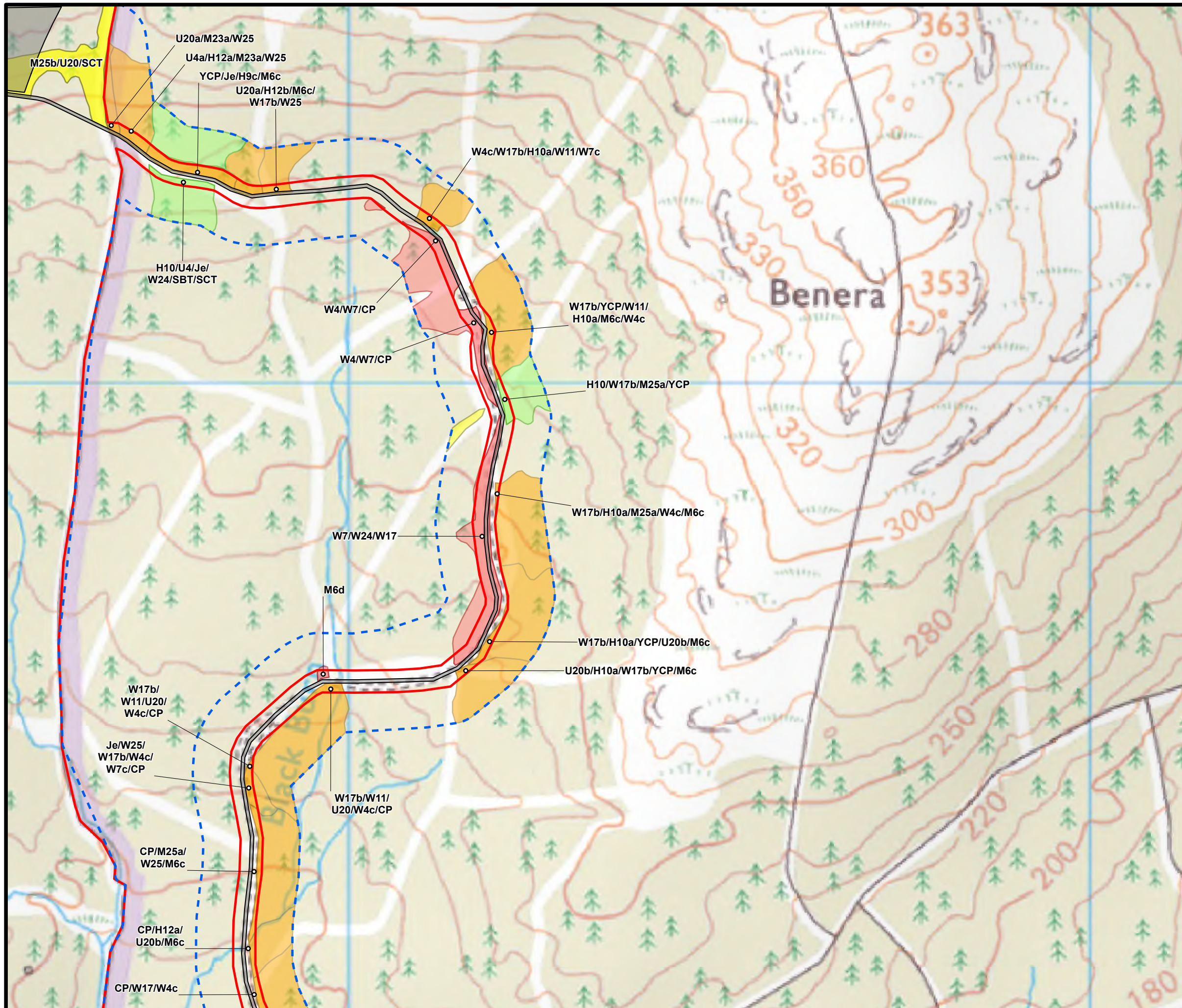
THIS DRAWING IS THE PROPERTY OF RENEWABLE ENERGY SYSTEMS LTD. AND NO REPRODUCTION MAY BE MADE IN WHOLE OR IN PART WITHOUT PERMISSION

BLAIR HILL WIND FARM

FIGURE 8.4.11

**POTENTIAL GROUNDWATER
DEPENDENT TERRESTRIAL
ECOSYSTEMS (GWDTEs)**

Reproduced from Ordnance Survey digital data © Crown copyright and database rights 2025. All rights reserved. License number 0100031673.



- SITE BOUNDARY
- INFRASTRUCTURE
- GWDTE SURVEY AREA
- POTENTIAL GWDTE**
- HIGHLY DOMINANT
- HIGHLY SUB-DOMINANT
- MODERATELY DOMINANT
- MODERATELY SUB-DOMINANT



SCALE - 1:5,000 @ A3

**ENVIRONMENTAL IMPACT
ASSESSMENT REPORT 2025**

THIS DRAWING IS THE PROPERTY OF RENEWABLE ENERGY SYSTEMS LTD. AND NO REPRODUCTION MAY BE MADE IN WHOLE OR IN PART WITHOUT PERMISSION

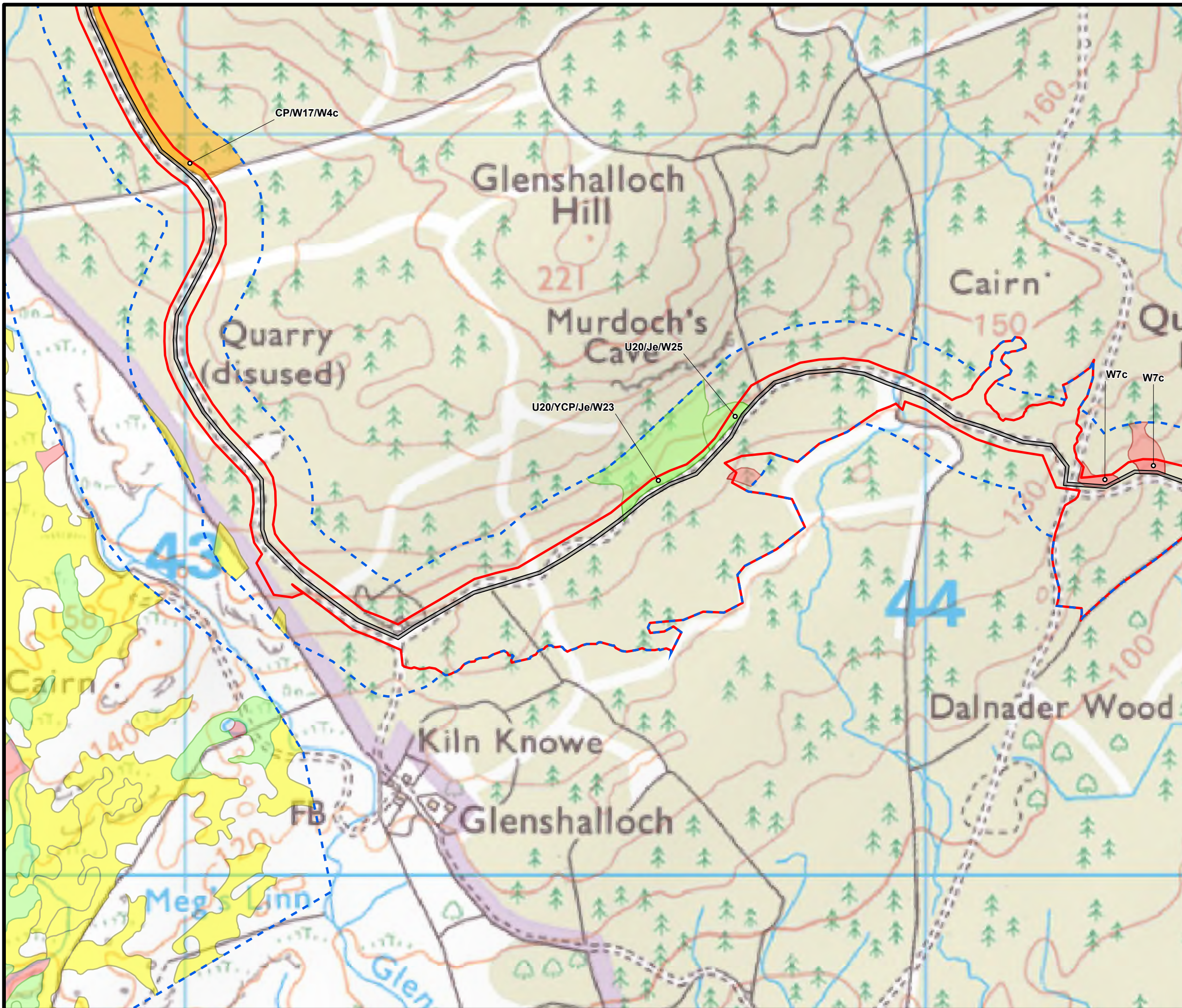


BLAIR HILL WIND FARM

FIGURE 8.4.12

**POTENTIAL GROUNDWATER
DEPENDENT TERRESTRIAL
ECOSYSTEMS (GWDTES)**

Reproduced from Ordnance Survey digital data © Crown copyright and database rights 2025. All rights reserved. License number 0100031673.



- SITE BOUNDARY
- INFRASTRUCTURE
- GWDTES SURVEY AREA
- POTENTIAL GWDTES**
- HIGHLY DOMINANT
- HIGHLY SUB-DOMINANT
- MODERATELY DOMINANT
- MODERATELY SUB-DOMINANT



SCALE - 1:5,000 @ A3

**ENVIRONMENTAL IMPACT
ASSESSMENT REPORT 2025**

THIS DRAWING IS THE PROPERTY OF RENEWABLE ENERGY SYSTEMS LTD. AND NO REPRODUCTION MAY BE MADE IN WHOLE OR IN PART WITHOUT PERMISSION

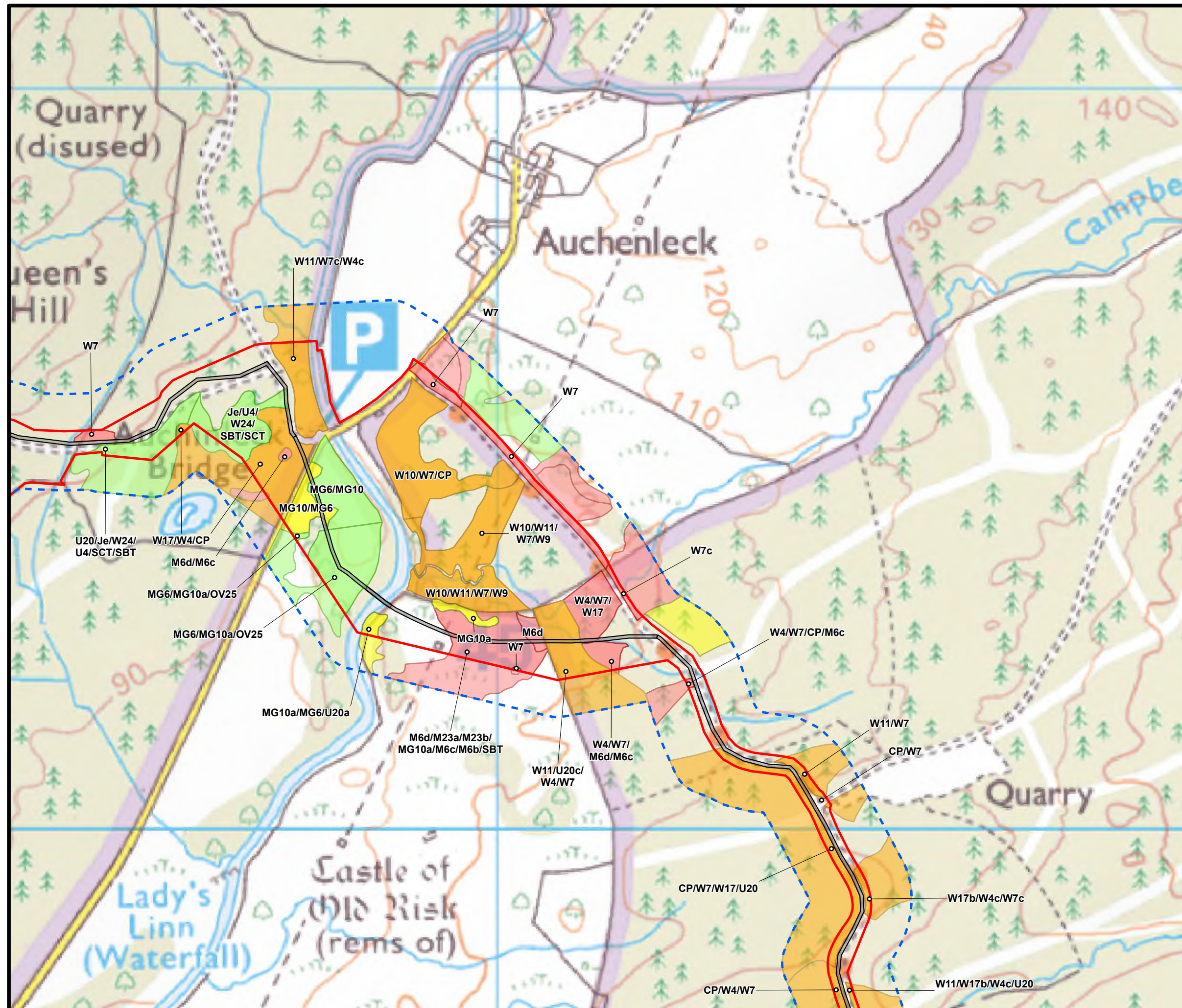
BLAIR HILL WIND FARM

FIGURE 8.4.13

**POTENTIAL GROUNDWATER
DEPENDENT TERRESTRIAL
ECOSYSTEMS (GWDTES)**

Reproduced from Ordnance Survey digital data © Crown copyright
and database rights 2025. All rights reserved. License number
0100031673.

- SITE BOUNDARY
 - INFRASTRUCTURE
 - GWDTES SURVEY AREA
- POTENTIAL GWDTES**
- HIGHLY DOMINANT
 - HIGHLY SUB-DOMINANT
 - MODERATELY DOMINANT
 - MODERATELY SUB-DOMINANT



SCALE - 1:5,000 @ A3

**ENVIRONMENTAL IMPACT
ASSESSMENT REPORT 2025**

THIS DRAWING IS THE PROPERTY OF RENEWABLE ENERGY SYSTEMS LTD. AND NO REPRODUCTION MAY BE MADE IN WHOLE OR IN PART WITHOUT PERMISSION

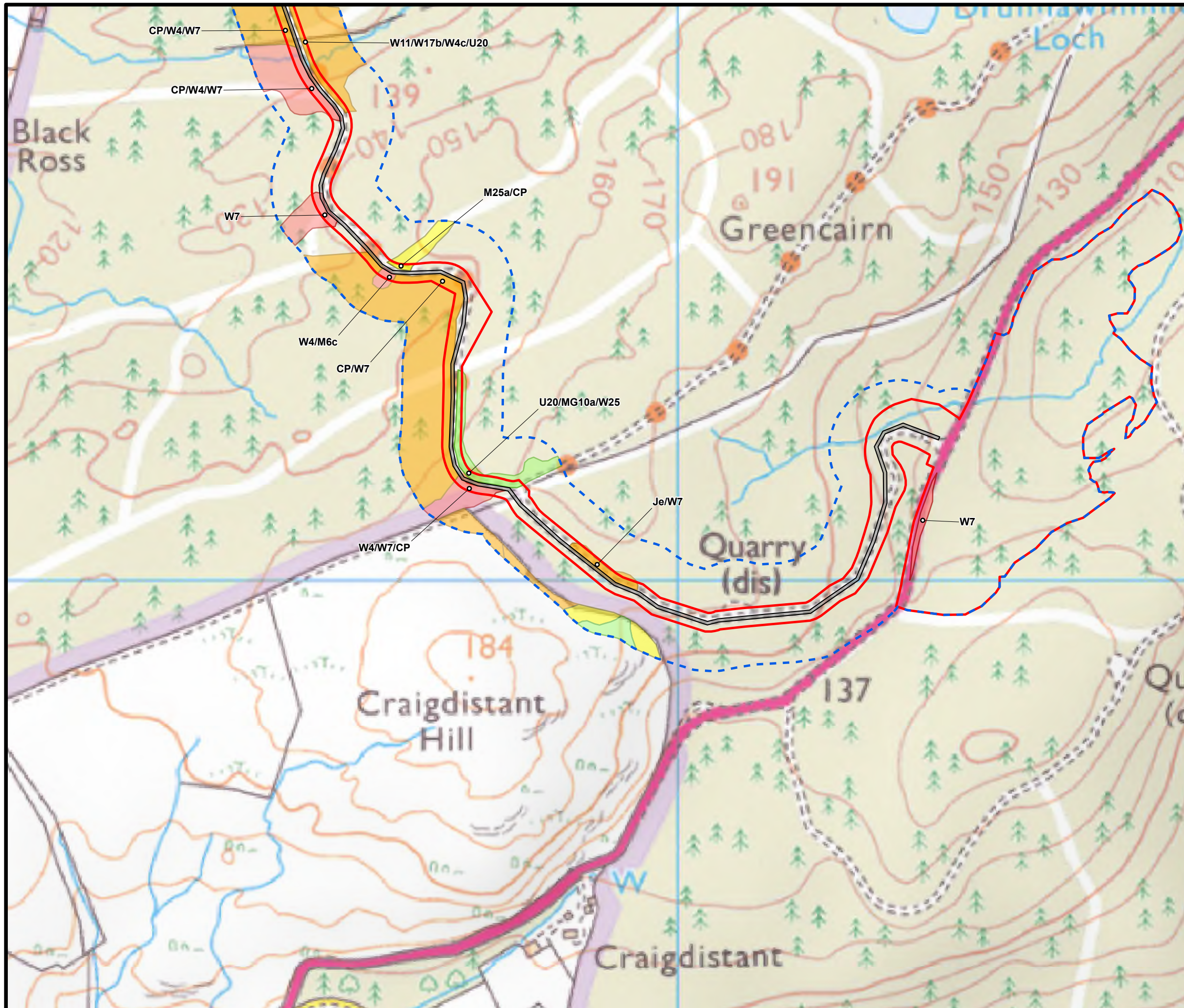


BLAIR HILL WIND FARM

FIGURE 8.4.14

POTENTIAL GROUNDWATER DEPENDENT TERRESTRIAL ECOSYSTEMS (GWDTES)

Reproduced from Ordnance Survey digital data © Crown copyright and database rights 2025. All rights reserved. License number 0100031673.



- SITE BOUNDARY
- INFRASTRUCTURE
- GWDTES SURVEY AREA
- POTENTIAL GWDTES**
- HIGHLY DOMINANT
- HIGHLY SUB-DOMINANT
- MODERATELY DOMINANT
- MODERATELY SUB-DOMINANT



SCALE - 1:5,000 @ A3

ENVIRONMENTAL IMPACT ASSESSMENT REPORT 2025

THIS DRAWING IS THE PROPERTY OF RENEWABLE ENERGY SYSTEMS LTD. AND NO REPRODUCTION MAY BE MADE IN WHOLE OR IN PART WITHOUT PERMISSION