

Section 36 Application Documents

The application for consent under Section 36 of the Electricity Act 1989 is supported by several reports and documents, which are available for viewing at today's event.

An Environmental Impact Assessment (EIA) was completed and the results presented in an EIA Report. The EIA is designed to inform the decision-making process by way of setting out the likely environmental effects of a project. Identification of potentially significant adverse effects leads to the incorporation of appropriate mitigation measures into both the design of the scheme and the way in which it is constructed and operated.

The **EIA Report** is split into five volumes:

- Volume 1 contains the main report.
- Volume 2 contains the figures that inform the EIA Report.
- Volume 3 contains supporting information and technical appendices for each of the technical chapters, and additional studies that have been prepared to inform the relevant assessments as reported in the EIA Report.
- Volume 4 is the Non-Technical Summary (NTS).
- Volume 5 contains Confidential Figures and Technical Appendices¹.

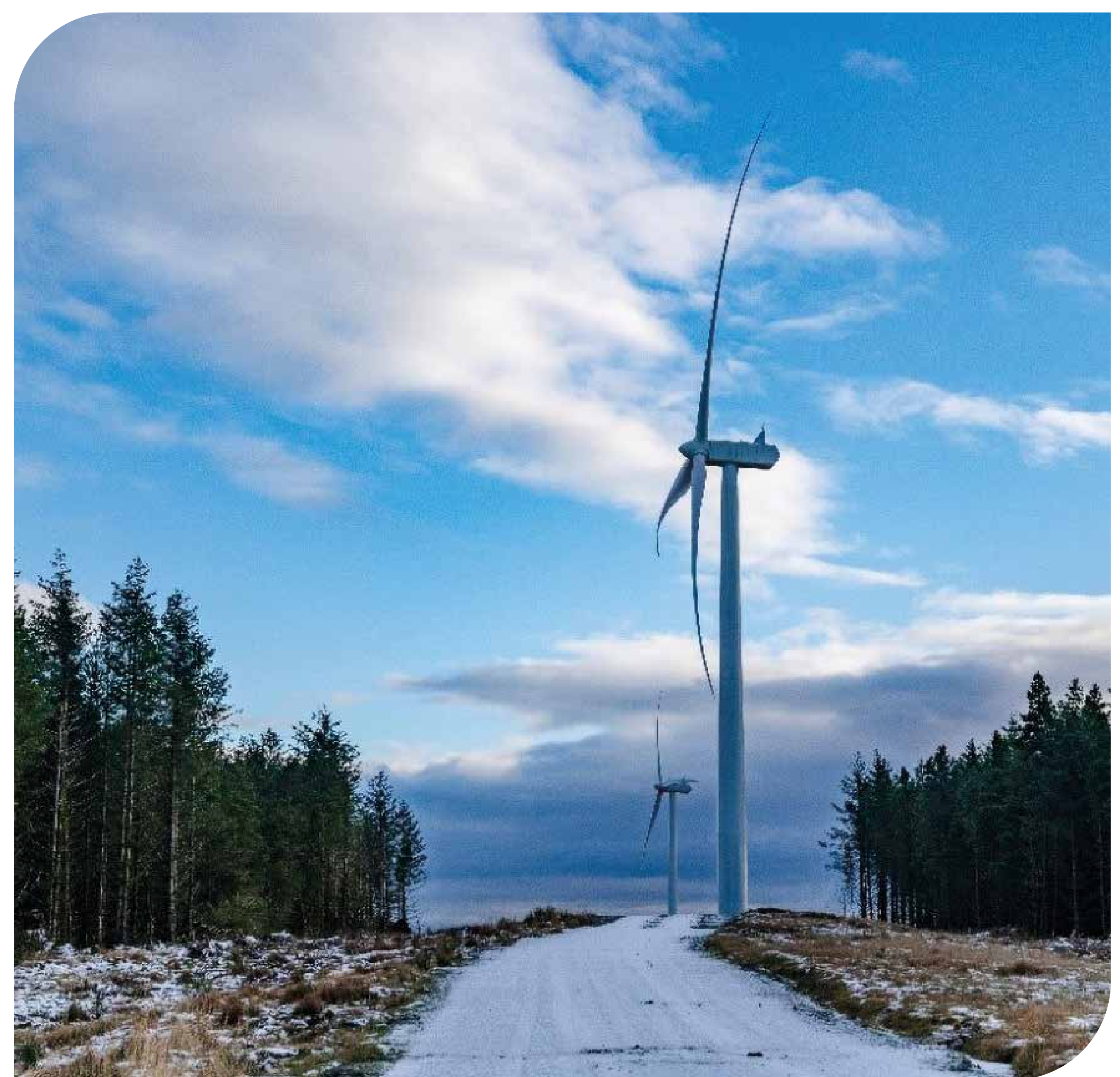
The **Non-Technical Summary** summarises the key findings of the EIA in easily accessible and non-technical language.

The **Pre-Application Consultation Report** explains the consultation activity undertaken by RES in advance of the planning application, reports on the outcomes and details where feedback has influenced the development process.

The **Planning Statement** presents an assessment of the Proposed Development against relevant policy. It considers the potential benefits and adverse effects which may arise and concludes as to the overall acceptability of the Proposed Development in relation to the planning policy framework.

The **Economic and Community Impact Report** assesses the potential socio-economic, recreation and tourism effects of the Proposed Development.

The **Design and Access Statement** explains the design of the Proposed Development, including processes and reasoning behind decision making during the early development stages that have influenced the location, layout and design of the Proposed Development.



Solwaybank Wind Farm, near Langholm, Dumfries and Galloway

¹This volume contains environmentally sensitive information and is not available for public viewing. It is shared with NatureScot, RSPB, Dumfries and Galloway Council and the Energy Consents Unit.

Blair Hill Wind Farm

www.blairhill-windfarm.co.uk

RES
power for good